

# Power Connector

Power filter in a circular connector package with integrated common mode and differential mode EMI filtering.

## Features

- Circular Power Connector can replace traditional larger EMI box filters (power entry filter) with similar performance
- Mates to a standard Mil-DTL-38999 connector insert arrangement 21-11
- Filtering included with space-saving and reduced installation cost for the system
- Current rating: 10 Amps
- Ideal for input power with systems using SMPS or any electronic system near radio communications equipment
- Patent-pending design

## Military & Aerospace Applications

- Ground communications
- Weapon systems
- Missile systems
- Military vehicles
- Radar systems
- UAVs
- Power Distribution
- Flight Controls
- De-icing systems
- Electrical systems
- Communications systems
- In-flight entertainment
- Cabin systems
- Cockpit displays
- Engine controls
- Actuator controls
- Fire protection systems

## Part Numbers

Part Number	Contact Style	Finish	Termination	Key
1255-098-0001	Pin	Nickel	PC tail	N (Normal)
1255-098-0002	Pin	Nickel	Solder Cup	N (Normal)
1255-098-0003	Pin	ODCAD	PC tail	N (Normal)
1255-098-0004	Pin	ODCAD	Solder Cup	N (Normal)

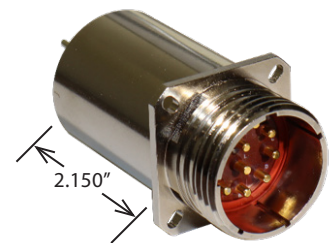
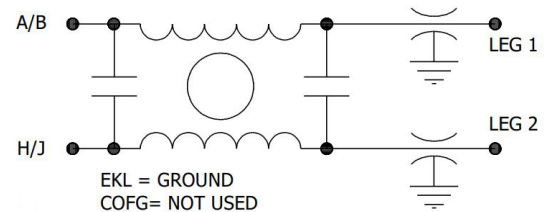
Note: Other Keying options available, contact APITech

Minimum Insertion Loss - Decibels (dB)					
Mode	100K	1M	10M	100M	1G
Common	22	50	65	50	50
Differential	20	70	70	—	—

## Electrical Specifications

Conn Size	Filter Desig.	Filter Circuits	Capacitance		Dielectric Withstanding Voltage	IR@WV	Current Rating	Working Voltage
			Value	Tolerance				
21	L-G	L	25nF	+/-20%	1000VDC	1Gohm	10A	120VAC 60Hz
	L-L	Pi	1µF	+/-20%	1000VDC	1Gohm	10A	240VAC 60Hz

## Dual Line Schematic



Mates to a standard Mil-DTL-38999 connector insert arrangement 21-11.