

Attenuator, Flanged

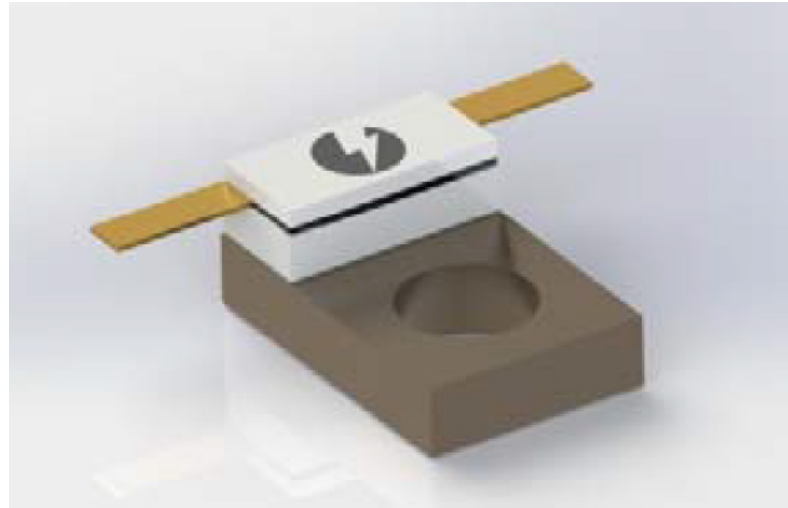
Model PPA10

**DC to 4 GHz
10 Watts**

Features

- Integrated Heat Sink
- Thin Film Resistor
- High Power
- Tabbed Contacts

PPA10 Attenuators are designed to uniformly reduce the power of the RF signal while generating only a small reflection even under extreme power and temperature conditions. These flange Attenuators can be used in high power amplifiers, distributed antennas, and as terminating Attenuators in Isolators where lower level signal sampling may be required. These flanged Attenuators are integrated with 0.3" x 0.2" heat sink. Other designs may be available upon request.



Technical Specifications

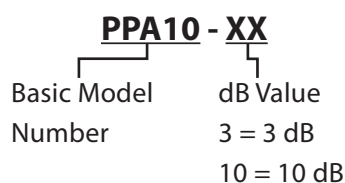
Parameter	Value
Frequency Range	DC to 4 GHz
Standard dB Values	1 thru 6, 10 & 20dB
Atten. Accuracy	<u>DC - 1</u> <u>1 - 2.5</u> <u>2.5 - 4.0 GHz</u>
1 - 10dB	±0.5dB ±0.5dB ±0.5dB
11 - 20dB	±1.0dB ±2.0dB ±3.0dB
Impedance	50 Ohms
Power Handling*	10 Watts Max.
VSWR	1.30:1 Max.
Operating Temp Range	-55°C to +150°C

Material

Feature	Material
Substrate	Beryllium Oxide
Resistor Material	Proprietary Thin Film
Cover	Alumina Ceramic
Flange	Nickel Plated Copper
Tab	Gold Plated Beryllium Copper

* Mounting surfaces shall not exceed 100°C Max.

How to Order



Ordering Examples

Model Number: PPA10-6
DC - 40 GHz; W.; 6 dB

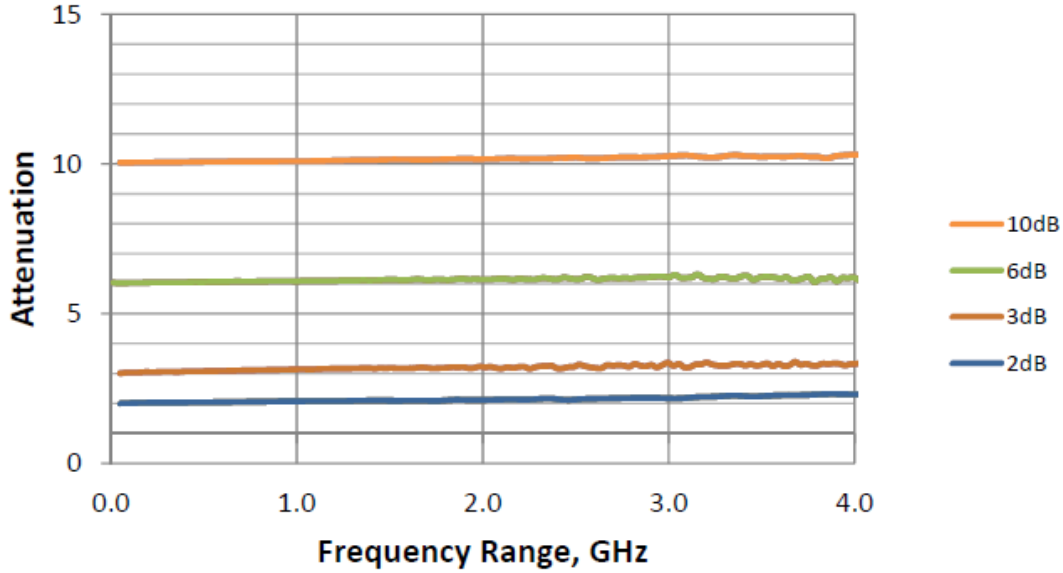
Attenuator, Flanged

Model PPA10

DC to 4 GHz
10 Watts

Performance Characteristics

Typical Performance



Physical Dimensions

Model Number: PPA10-X

