

ISDN U-BUS

Input/Output Transformer

TPW4670

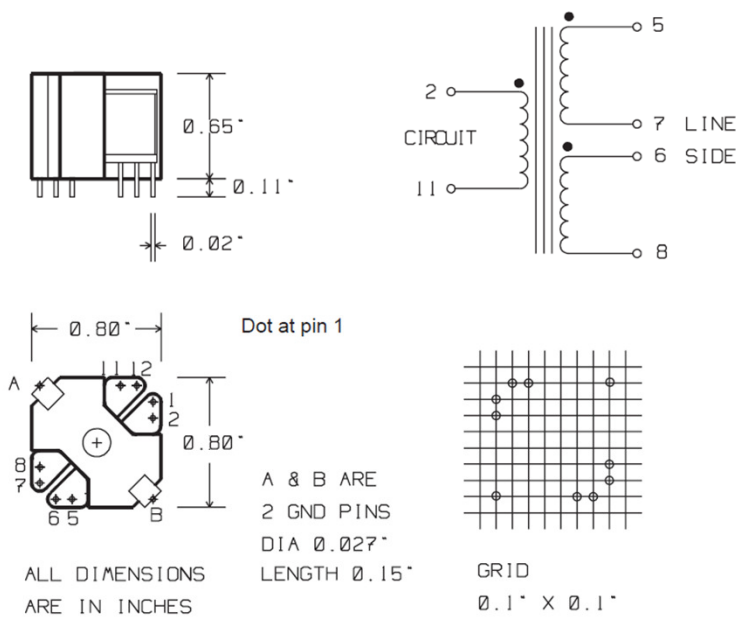
The TPW4670 transformer is designed to interface with the subscribers premises (NT) and the 2-wire line side of the Central Office Equipment (LT) in the ISDN Network.

TPW4670 meets the electrical specifications of ANSI T1.601-1988 and is approved for the **Siemens PEB2091** device.

TPW4670-1 meets the requirements of the **Thomson SD5411** device



MECHANICAL



ELECTRICAL		TPW4670	TPW4670-1
Line Impedance		135 Ω	135 Ω
Inductance	(5-7)+(6-8)	14.5 mH	14.5 mH
Leakage Inductance	(2-11)	< 55 μH	< 55 μH
Winding Capacitance	(5-7)+(6-8)	< 80 pF	< 80 pF
Turns Ratio	(2-11) : (5-7)+(6-8)	1 : 1.6	1 : 1.5
Longitudinal Balance	1 - 4 KHz 4 - 160 KHz	> 65 dB > 58 dB	> 65 dB > 58 dB
DC Capability (Line Side)		50mA	50 mA
Dielectric Strength		2000 V rms	2000 V rms.