

ISDN

DC/DC Converter Transformer

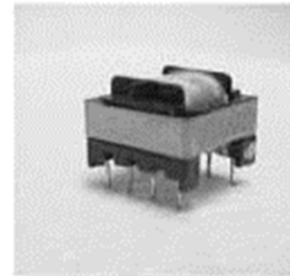
TEP5606

TEP5606 is designed and approved to be used as a power supply transformer with the Siliconix SI 9105 device.

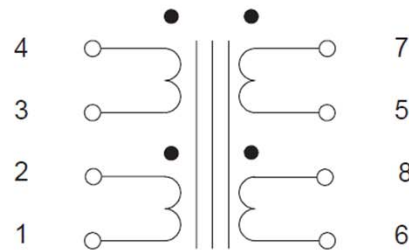
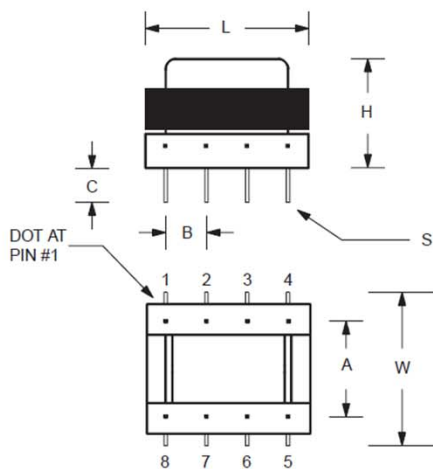
TEP5606 meets the CCITT I.430 requirements with reference to various modes of operation.

Features:

- Compact size
- Efficient
- Reinforced insulation (TEP5606-1) in accordance with IEC950, EN60950



MECHANICAL



DIMENSIONS, Inches (mm)

P/N	L	W	H	A	B	C	S
TEP5606	0.87 (22.0)	0.83 (21.0)	0.63 (16.0)	0.60 (15.3)	0.20 (5.1)	0.12 (3.0)	0.025 (0.64)

ELECTRICAL SPECIFICATIONS

Input Voltage	(3 - 4)
Output Voltage	(5 - 7) & (6 - 8)
Output Current	
Turns Ratio	(3-4) : (1-2) : (5-7) : (6-8)
Inductance	(3 - 4)
Dielectric Strength	

TEP5606

TEP5606-1

24 - 50 V	24 - 50 V
2 x 5 V	2 x 5 V
3 - 200 mA	3 - 200 mA
4.52 : 1.9 : 1 : 1	4.52 : 1.9 : 1 : 1
> 3.3 mH	> 3.3 mH
1500 V	4000 V