

ISDN U-Bus

Input/Output Transformer

TPW5624

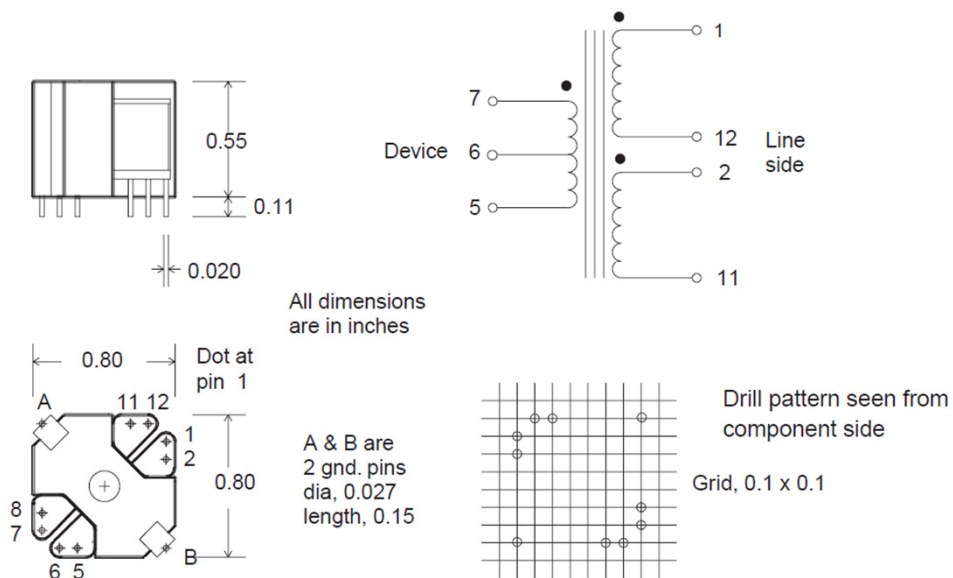
TPW5524 is designed to interface with the subscribers premises (NT) and the 2-wire line side of the Central Office Equipment (LT) in the ISDN.

TPW5624 meets the electrical specifications for the Motorola **MC145572** device.

TPW5624 conforms to the requirements of the ANSI T1.601-1988.



MECHANICAL



ELECTRICAL SPECIFICATION

TPW5624

Line Impedance	(Ω)		135	
DCR	(Ω)	(7 - 5)	3.9	
		(2 - 11)	4.0	
		(1 - 12)	4.0	
Inductance	(mH)	(1 - 11)	> 28	@ 80 mA
Leakage Ind.	(μ H)	(1 - 11)	< 20	strap 2 to 12
Turns Ratio		(7 - 5) : (1 - 11)	1 : 1.25	
Longitudinal Bal.	(dB)	1 - 4 KHz	> 60	
		4 - 160 KHz	> 55	
Dielectric Strength	(V rms)	Pri to Sec	1500	
		windings to core	1500	