

## ISDN U-Bus

## Input/Output Transformer

## TPW5640

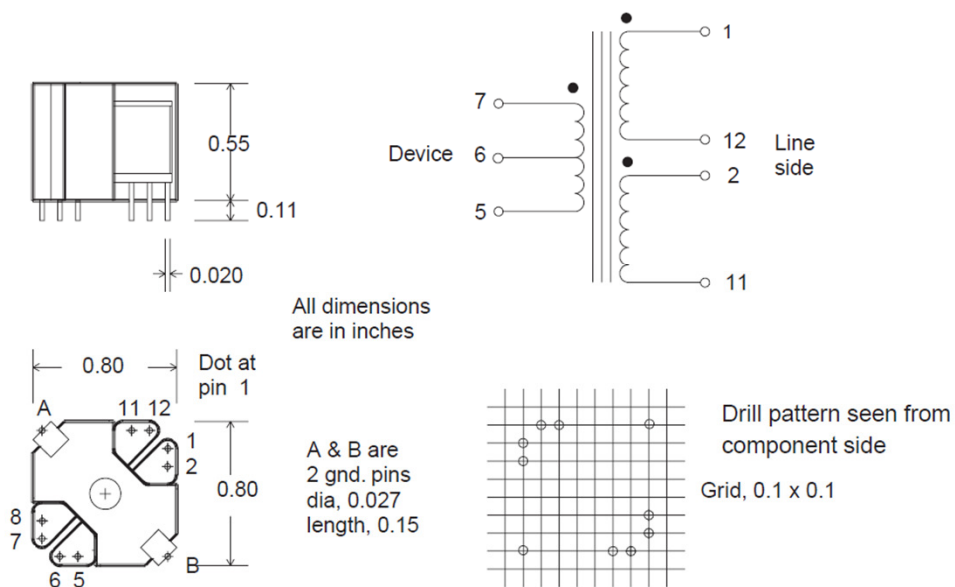
TPW5640 is designed to interface with the subscribers premises (NT) and the 2-wire line side of the Central Office Equipment (LT) in the ISDN.

TPW5640 meets the electrical specifications for the Motorola **MC145472** device.

TPW5640 conforms to the requirements of the ANSI T1.601-1988.



### MECHANICAL



### ELECTRICAL SPECIFICATION

### TPW5640

Line Impedance	( $\Omega$ )		135	
DCR	( $\Omega$ )	(7 - 5)	2.3	
		(2 - 11)	2.3	
		(1 - 12)	2.3	
Inductance	(mH)	(1 - 11)	> 28	@ 50 mA
Leakage Ind.	( $\mu$ H)	(1 - 11)	< 20	strap 2 to 12
Turns Ratio		(7 - 5) : (1 - 11)	1 : 2	
Longitudinal Bal.	(dB)	1 - 4 KHz	> 60	
		4 - 160 KHz	> 55	
Dielectric Strength	(V rms)	Pri to Sec	1500	
		windings to core	1500	