

# SMD

# Power Inductors and Transformers

# 8417-XX

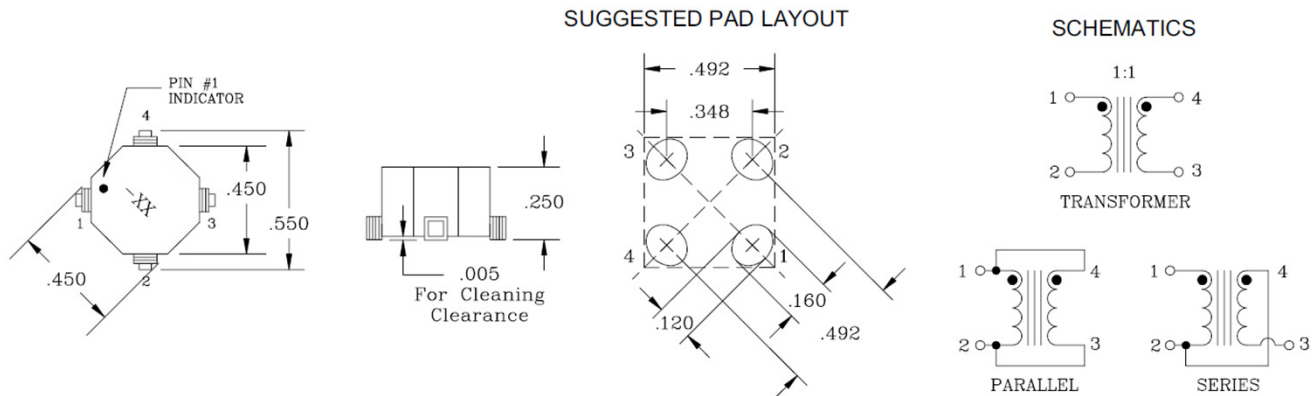
**INDUCTORS:** low inductance with high current when wired in parallel or higher inductance with lower current when wired in series

**TRANSFORMERS:** (1:1) electrical isolation and a wide voltage transformation

- Extended temperature range -40°C to +85°C
- Isolation voltage: 300 V



### MECHANICAL AND SCHEMATIC (All dimensions in inches)



### ELECTRICAL SPECIFICATIONS @ 25°C

Part Number	Parallel Ratings				Series Ratings			
	OCL ±20% (µH)	Full Load Inductance (µH min.)	Full Load Current (Ade)	DCR (Ω max.)	OCL ±20% (µH)	Full Load Inductance (µH min.)	Full Load Current (Ade)	DCR (Ω max.)
8417-01	0.44	0.32	7.00	0.004	1.76	1.29	3.50	0.016
8417-02	0.78	0.55	6.00	0.005	3.14	2.21	3.00	0.020
8417-03	1.23	0.85	5.00	0.006	4.90	3.41	2.50	0.024
8417-04	1.76	1.06	4.90	0.007	7.06	4.24	2.45	0.028
8417-05	4.90	2.59	4.40	0.014	19.60	10.37	2.20	0.056
8417-06	8.28	4.29	3.50	0.018	33.12	17.14	1.75	0.072
8417-07	9.60	4.82	3.40	0.019	38.42	19.28	1.70	0.078
8417-08	14.16	6.76	3.00	0.024	56.64	27.03	1.50	0.096
8417-09	19.60	10.68	2.10	0.055	78.40	42.73	1.05	0.220
8417-10	25.92	13.32	2.00	0.063	103.68	53.27	1.00	0.253
8417-11	33.12	16.82	1.80	0.072	132.50	67.27	0.90	0.287
8417-12	50.18	25.03	1.50	0.111	200.70	100.11	0.75	0.443
8417-13	67.08	35.29	1.20	0.157	268.32	141.15	0.60	0.630
8417-14	99.23	54.56	0.92	0.302	396.90	218.25	0.46	1.210
8417-15	148.23	77.17	0.82	0.372	592.90	308.69	0.41	1.488
8417-16	200.70	111.08	0.64	0.545	802.82	444.32	0.32	2.180
8417-17	298.12	147.92	0.62	0.672	1192.46	591.66	0.31	2.687