

62-STB Series

DIN Rail Mounted 250 VAC EMI Filters



Features

- Low leakage current versions available
- Chassis or DIN rail mount
- High pulse or noise attenuation versions available
- Easy connection and installation
- RoHS compliant
- Safety agency approved
- Epoxy molded for reliability

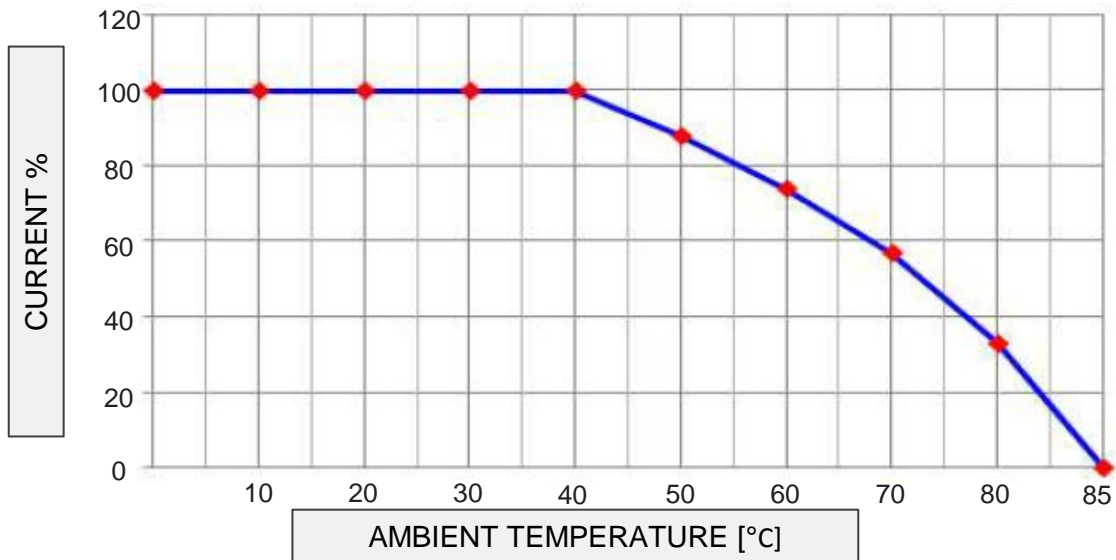
Applications

- Medical: x-ray machine, bone mineral densitometer
- Small electronic devices: printer, refrigerator, universal power supply, textile machinery, treadmill, electrical boiler
- Control panel for electrical installation
- Measuring and testing instruments

Specifications

- Operating Temperature Range: -25°C to +85°C including temperature rise
- Storage Temperature Range: -25°C to 60°C
- Insulation Resistance: 300MΩ minimum at 500V DC between line and ground

Derating Curve

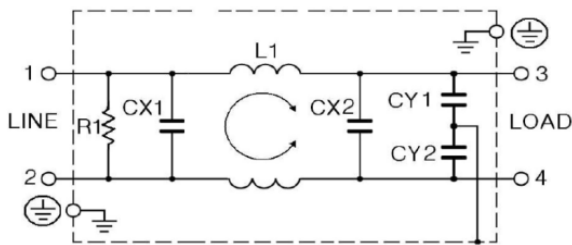


Part Numbers - 6A to 30A, 250 VAC EMI Filters

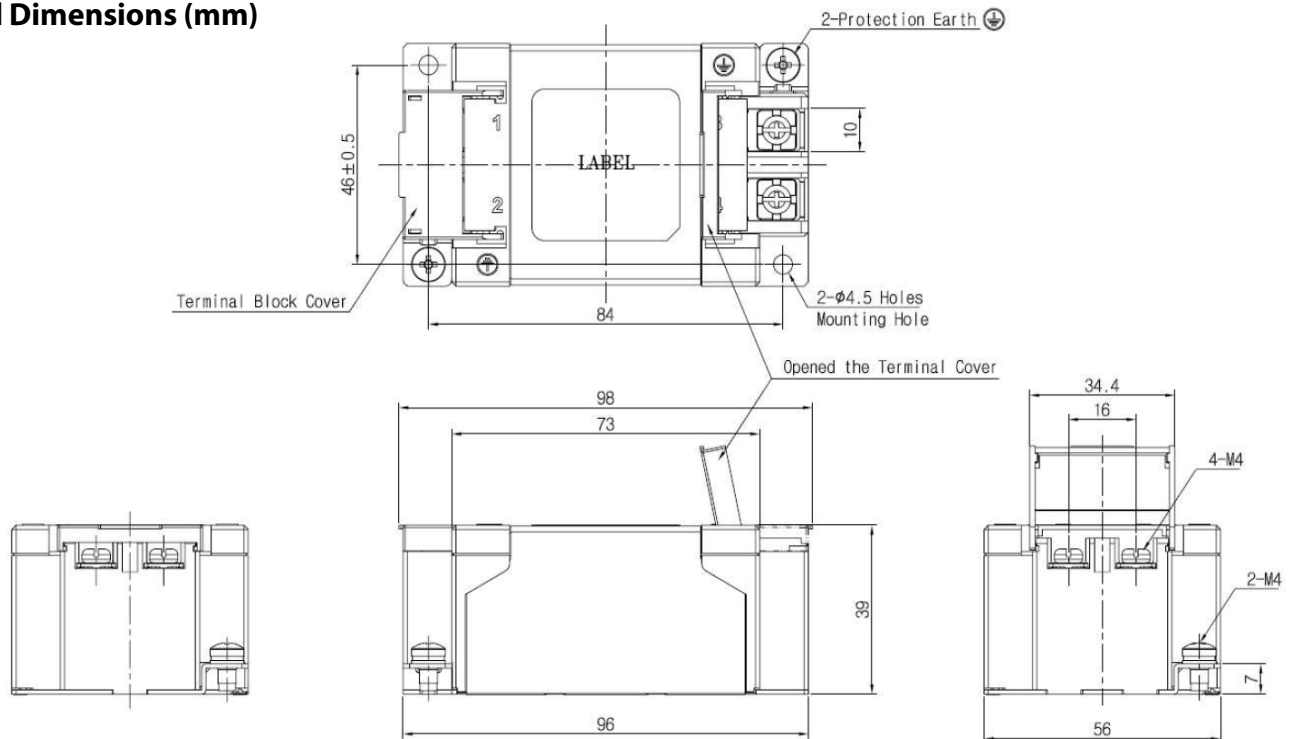
Model	Rated Voltage [50/60Hz] [VAC]	Rated Current Max.	Leakage Current Max [at 250V, 60Hz]	Voltage Drop Max. [V]	Temp. Rise Max.	Inductance L1 +50,-30%	X-Capacitor CX1,2 ± 20%	Y-Capacitor CY1,CY2 [pF] ± 20%	Resistor R1 ± 10% (1/2W)
62-STB-06-5-14D	250VAC	6A	0.5mA	1.0V	45°C	14.0mH	0.47µF	3300pF	1.0MΩ
62-STB-10-4-14D	250VAC	10A	0.1mA	1.0V	45°C	5.7mH	0.47µF	470pF	1.0MΩ
62-STB-10-5-14D	250VAC	10A	0.5mA	1.0V	45°C	5.7mH	0.47µF	3300pF	1.0MΩ
62-STB-16-5-14D	250VAC	16A	0.5mA	1.0V	45°C	2.2mH	0.47µF	3300pF	1.0MΩ
62-STB-20-5-14D	250VAC	20A	0.5mA	1.0V	45°C	1.4mH	0.47µF	3300pF	1.0MΩ
62-STB-30-5-14D	250VAC	30A	0.5mA	1.0V	45°C	0.5mH	0.47µF	3300pF	1.0MΩ

**Also offered without din rail mount. Remove "D" from part number when ordering.*

Circuit Diagram, Shapes and Dimensions (mm)



Shapes and Dimensions (mm)



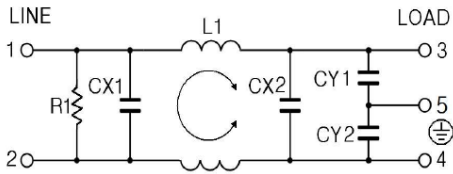
Part Numbers - 6A to 20A, 250 VAC EMI Filters

Model	Rated Voltage [50/60Hz] [VAC]	Rated Current Max.	Leakage Current Max [at 250V, 60Hz]	Voltage Drop Max. [V]	Temp. Rise Max.	Inductance L1 +50,-30%	X-Capacitor CX1,2 ± 20%	Y-Capacitor CY1,CY2 [pF] ± 20%	Resistor R1 ± 10% (1/2W)
62-STB-06-5-13D	250VAC	6A	0.5mA	1.0V	45°C	4.2mH	0.33µF	3300pF	1.0MΩ
62-STB-10-5-13D	250VAC	10A	0.5mA	1.0V	45°C	1.7mH	0.33µF	3300pF	1.0MΩ
62-STB-16-5-13D	250VAC	16A	0.5mA	1.0V	45°C	0.8mH	0.33µF	3300pF	1.0MΩ
62-STB-20-5-13D	250VAC	20A	0.5mA	1.0V	45°C	0.35mH	0.33µF	3300pF	1.0MΩ

**Only offered on din rail mount.*



Circuit Diagram, Shapes and Dimensions (mm)



Shapes and Dimensions (mm)

