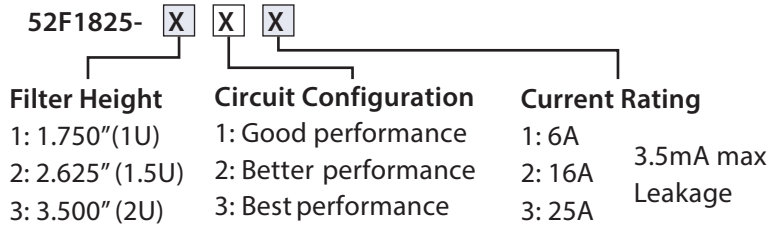


Modular Power Filter

High performance, high-reliability, configurable catalog EMI filter for where SWaP-C is a critical factor

Part Number Configuration



See page 3 for circuit configuration
 *see pages 4-6 to compare IL data

Electrical Specifications

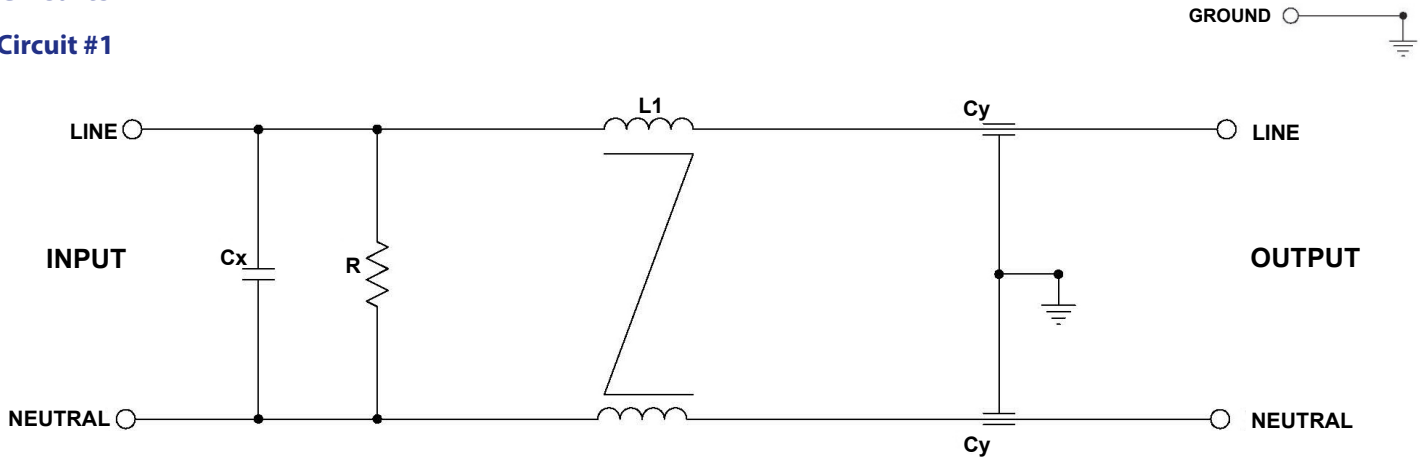
Part Number	Filter Height	*IL Performance	Current (Amps)	Voltage	Frequency	Leakage Current (Max)
52F1825-111	1U (1.75" / 44.45mm)	Good	6	120 / 240 VAC	50 / 60 Hz	3.5 mA
52F1825-121	1U (1.75" / 44.45mm)	Better				
52F1825-131	1U (1.75" / 44.45mm)	Best				
52F1825-211	1.5U (2.625" / 66.68mm)	Good				
52F1825-221	1.5U (2.625" / 66.68mm)	Better				
52F1825-231	1.5U (2.625" / 66.68mm)	Best				
52F1825-311	2U (3.50" / 88.9mm)	Good				
52F1825-321	2U (3.50" / 88.9mm)	Better				
52F1825-331	2U (3.50" / 88.9mm)	Best				
52F1825-112	1U (1.75" / 44.45mm)	Good	16			
52F1825-122	1U (1.75" / 44.45mm)	Better				
52F1825-132	1U (1.75" / 44.45mm)	Best				
52F1825-212	1.5U (2.625" / 66.68mm)	Good				
52F1825-222	1.5U (2.625" / 66.68mm)	Better				
52F1825-232	1.5U (2.625" / 66.68mm)	Best				
52F1825-312	2U (3.50" / 88.9mm)	Good				
52F1825-322	2U (3.50" / 88.9mm)	Better				
52F1825-332	2U (3.50" / 88.9mm)	Best				
52F1825-113	1U (1.75" / 44.45mm)	Good	25			
52F1825-123	1U (1.75" / 44.45mm)	Better				
52F1825-133	1U (1.75" / 44.45mm)	Best				
52F1825-213	1.5U (2.625" / 66.68mm)	Good				
52F1825-223	1.5U (2.625" / 66.68mm)	Better				
52F1825-233	1.5U (2.625" / 66.68mm)	Best				
52F1825-313	2U (3.50" / 88.9mm)	Good				
52F1825-323	2U (3.50" / 88.9mm)	Better				
52F1825-333	2U (3.50" / 88.9mm)	Best				

Modular Power Filter

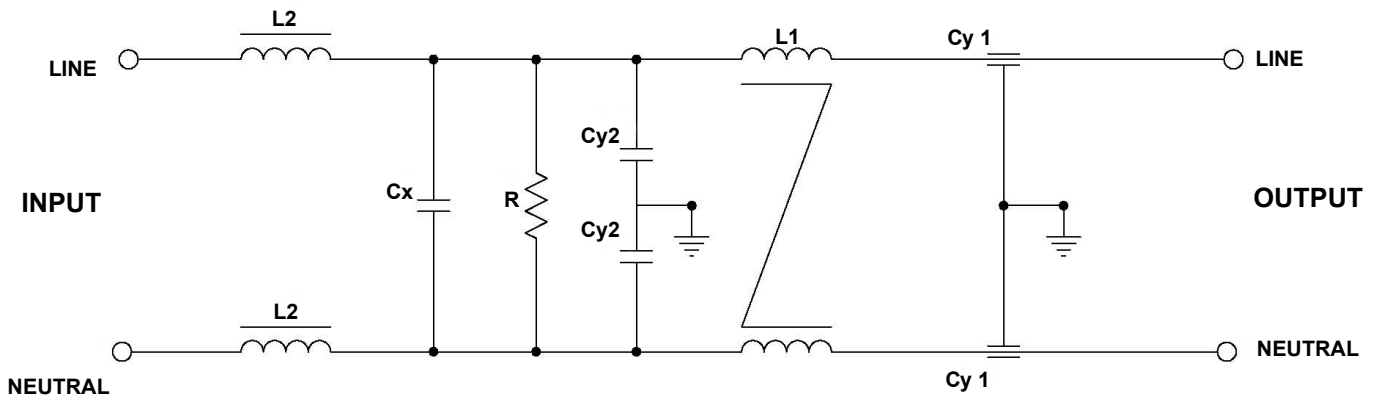
High performance, high-reliability, configurable catalog EMI filter for where SWaP-C is a critical factor

Circuits

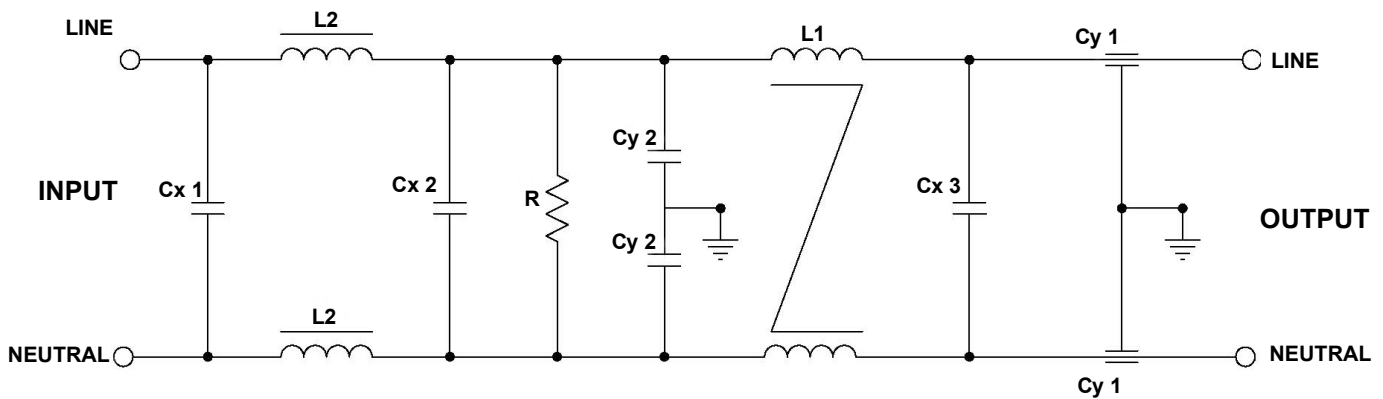
Circuit #1



Circuit #2



Circuit #3



Modular Power Filter

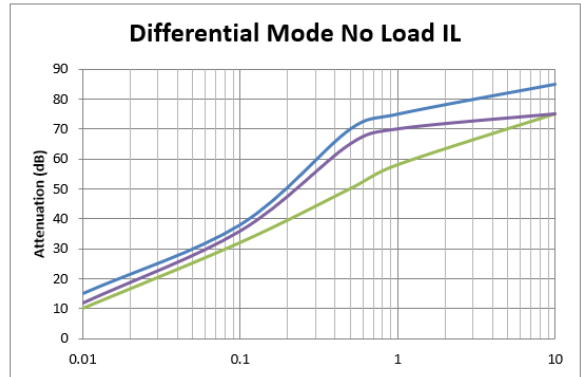
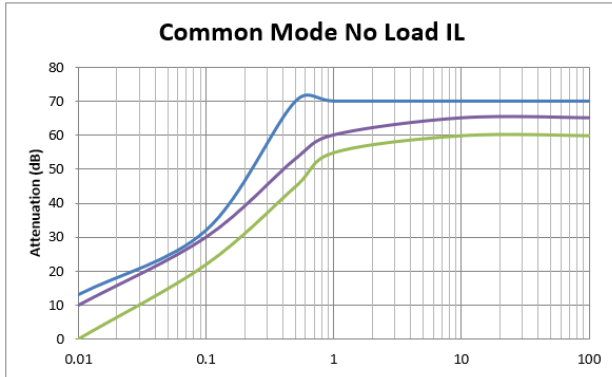
High performance, high-reliability, configurable catalog EMI filter for where SWaP-C is a critical factor

Typical Insertion Loss by Part Number

GOOD

BETTER

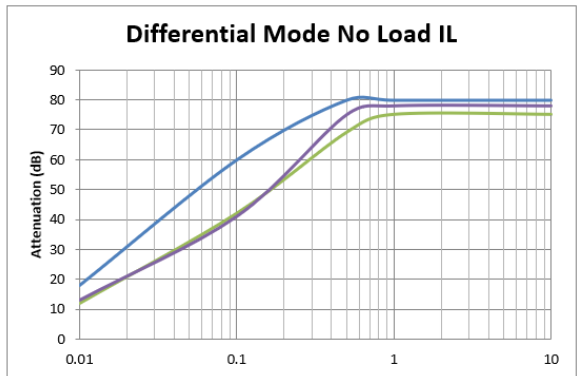
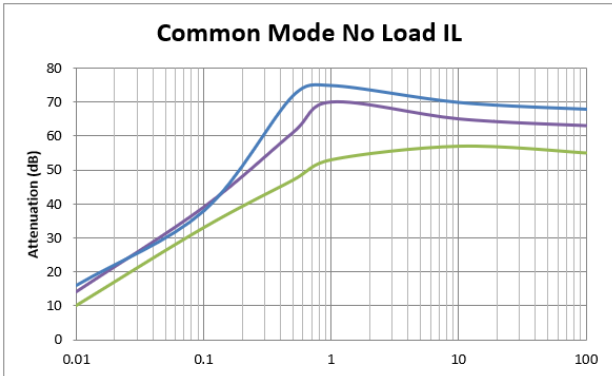
BEST



52F1825-111

52F1825-121

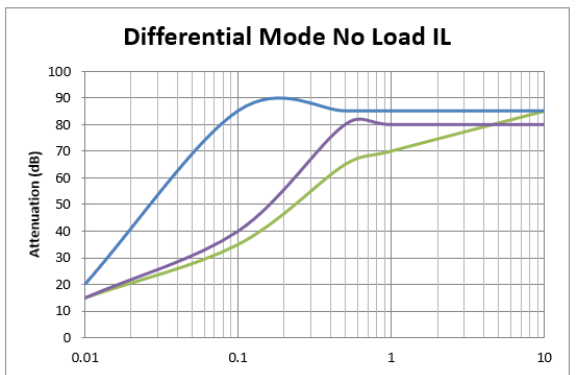
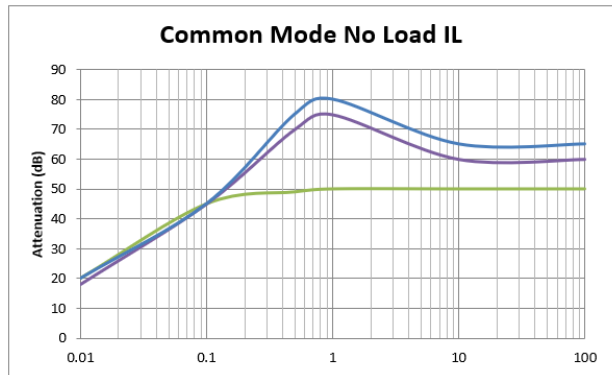
52F1825-131



52F1825-211

52F1825-221

52F1825-231



52F1825-311

52F1825-321

52F1825-331

Modular Power Filter

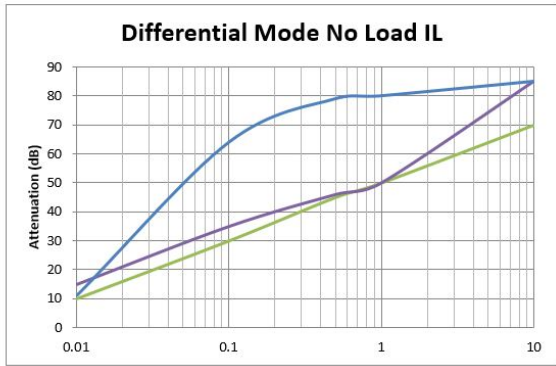
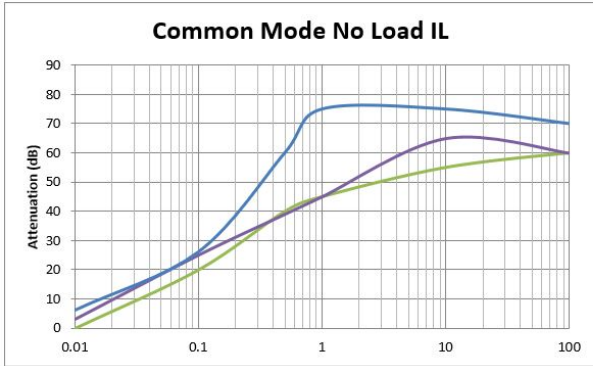
High performance, high-reliability, configurable catalog EMI filter for where SWaP-C is a critical factor

Typical Insertion Loss by Part Number

GOOD

BETTER

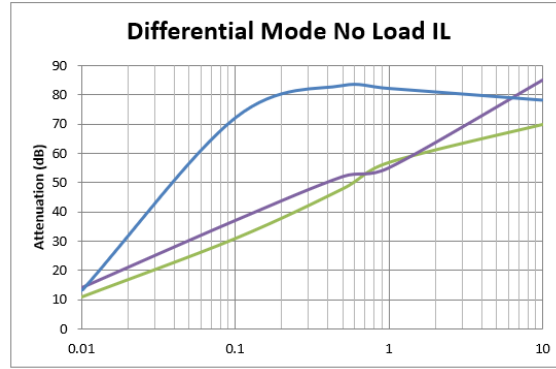
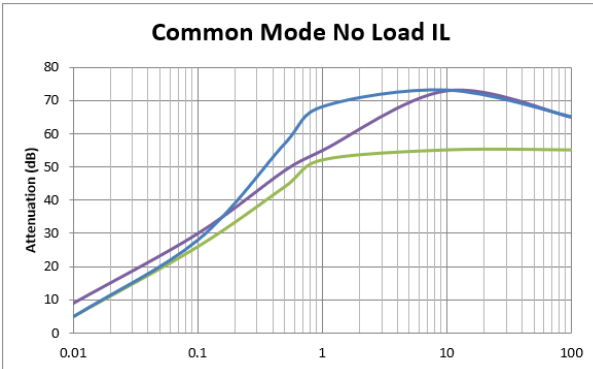
BEST



52F1825-112

52F1825-122

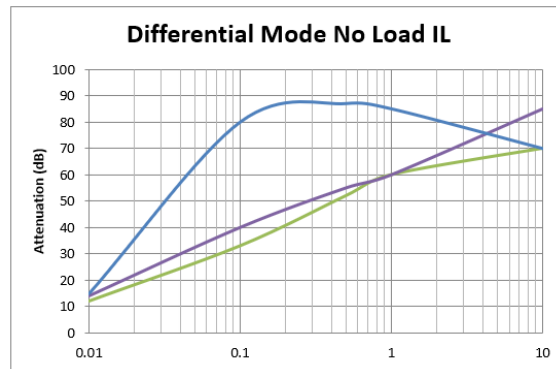
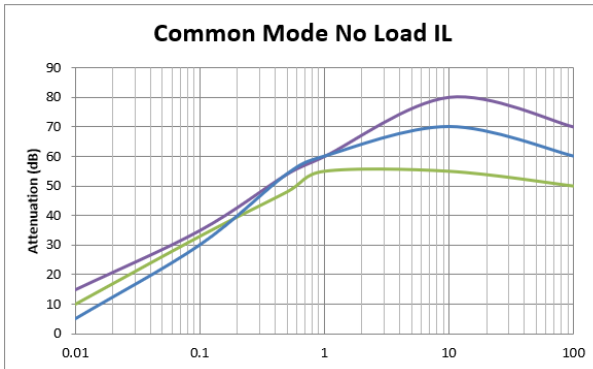
52F1825-132



52F1825-212

52F1825-222

52F1825-232



52F1825-312

52F1825-322

52F1825-332

Modular Power Filter

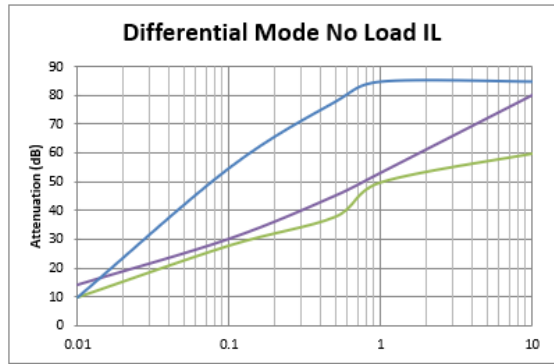
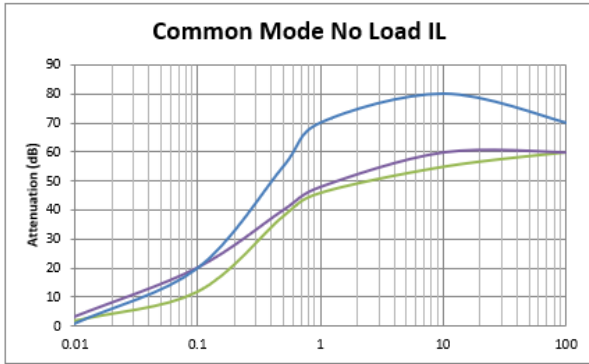
High performance, high-reliability, configurable catalog EMI filter for where SWaP-C is a critical factor

Typical Insertion Loss by Part Number

GOOD

BETTER

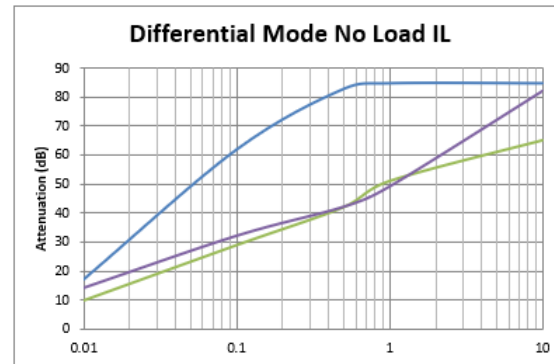
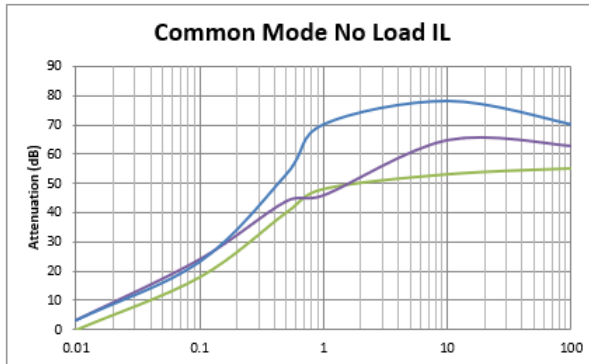
BEST



52F1825-113

52F1825-123

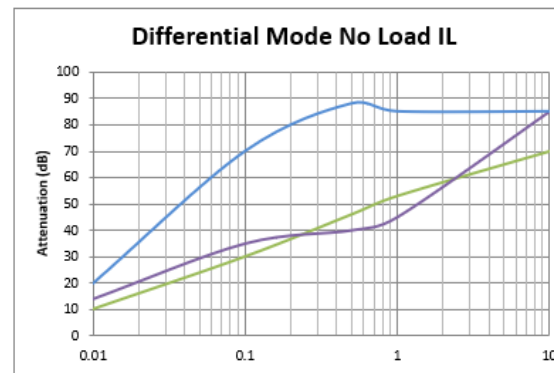
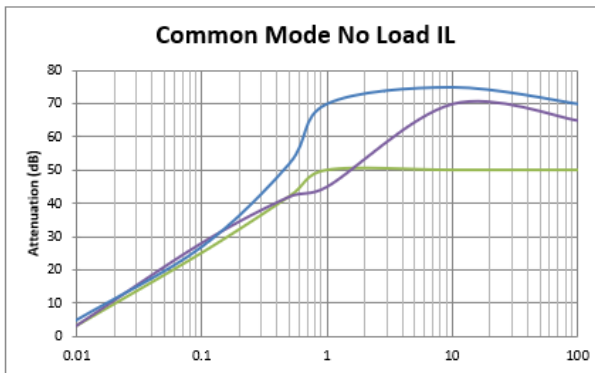
52F1825-133



52F1825-213

52F1825-223

52F1825-233



52F1825-313

52F1825-323

52F1825-333