

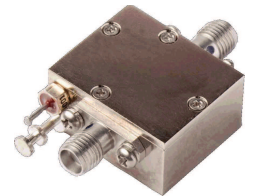
Microwave Amplifier

1500 MHz to 3000 MHz

Model BX9872

FEATURES

- Low Noise Figure: 2.3 dB
- Laser Sealed Housing
- High IP3: +31 dBm
- Field Replaceable Connectors



The Model BX9872 is standard high frequency amplifier covering 1500 MHz to 3000 MHz. This single stage design, utilizes a laser sealed housing for the ultimate in environmental protection. This standard design may also be ordered in a screened MIL-STD-883 version as a model SX9872. All specification ratings are based on measurements in a 50 ohm system with a DC supply voltage tolerance of +/- 2%.

Parameter	Typical	Min. / Max.
Frequency Range	1500 MHz to 3000 MHz	1500 MHz to 3000 MHz
Gain	15.5 dB	15 dB Min / 16 dB Max
Gain Flatness	+/- 0.25 dB	-
Gain vs. Temperature**	+/- 1.0 dB	+/- 2.0 dB Max.
Input VSWR	1.4:1	1.5:1 Max.
Output VSWR	1.4:1	1.5:1 Max.
Output 3rd Order Intercept Point	+31 dBm	+30 dBm Min.
Noise Figure	2.3 dB	2.5 dB Max.
Supply Voltage	+12 volts	+12 volts
Supply Current	100 mA	150 mA Max.
Revision: 7/18/2013	Typical values are measured at 25°C but not guaranteed.	
Housing Size	0.820" L x 1.000" W x 0.300" H (Housing #088-00386)	
RF Connectors	SMA Female Replaceable Connectors	
Min. / Max. Values	25°C , (**-20°C to +85°C)	

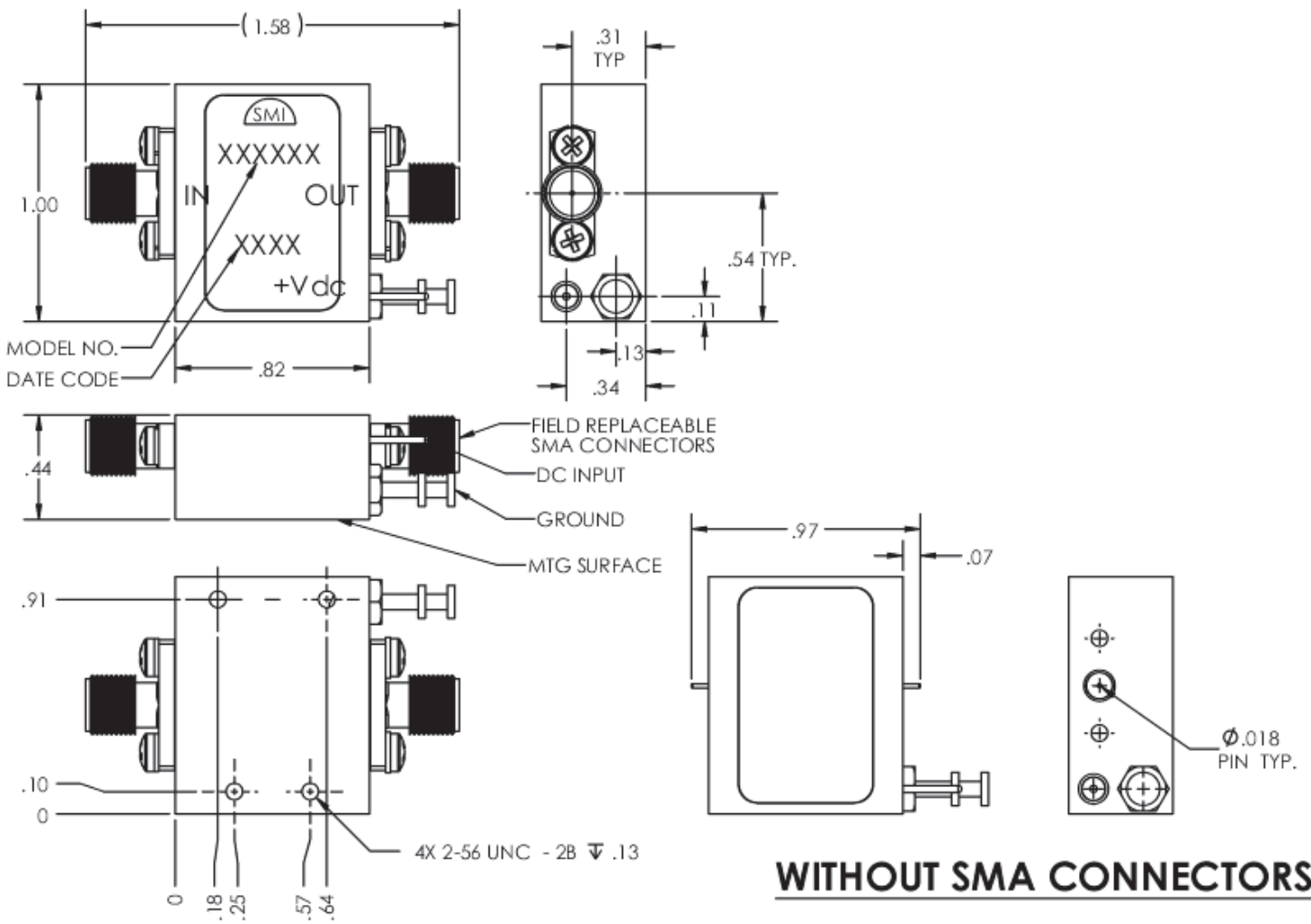
Maximum (No Damage) Ratings

Storage Temperature	-55°C to +85°C
Operating Temperature (Case)	-28°C to +85°C
DC Voltage @ 25°C	+15 VDC
Input Drive @ 25°C (CW)	+13 dBm

Microwave Amplifier

1500 MHz to 3000 MHz
 Model BX9872

Outline Drawing



WITHOUT SMA CONNECTORS