

RF/Microwave Amplifier



Features

- No Additional Circuitry Needed, Internal Blocking Caps Included
- Excellent Phase Noise Performance
- Unconditionally Stable
- Modifications Available at No Additional Charge
- Environmental Screening Available

Technical Specifications

Parameter	Typical	Min/Max
Frequency Range	2500 MHz – 4500 MHz	2500 MHz - 4500 MHz
Gain	10 dB	8 dB
Noise Figure	2.75 dB	4.0 dB
Output Power @ 1 dB Compression	+19 dBm	+17 dBm
Output 3 rd Order Intercept	+30 dBm	---
Output 2 nd Order Intercept	+40 dBm	---
Reverse Isolation	20 dB	---
Input VSWR	1.5:1	2.0:1
Output VSWR	1.5:1	2.0:1
Supply Voltage	15 volts	15 volts
Supply Current	75 mA	100 mA

Absolute Maximum Ratings

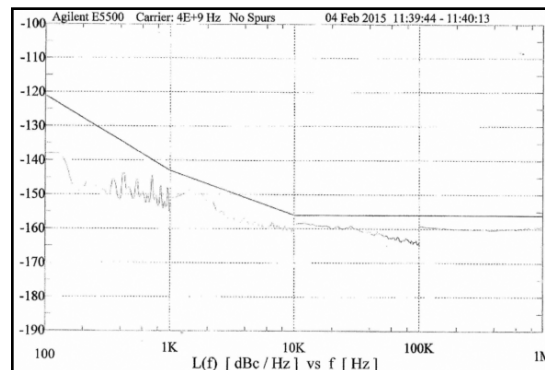
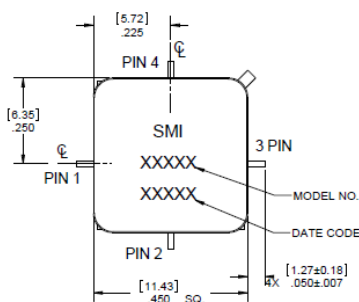
Maximum (No Damage) Ratings	
Storage Temperature	-62°C to +125°C
Operating Temperature	-55°C to +125°C
Case Temperature	+125°C
DC Voltage @ 25°C	+ 18 volts
Continuous RF Input Power	+ 13 dBm
Short Term RF Input Power	50 Milliwatts (1 Minute Max.)
Maximum Peak Power	0.1 Watt (3 μsec Max.)

* Typical values are measured at 25°C, but not guaranteed.

Outline Drawing

(For reference only)

(TN3122PM)



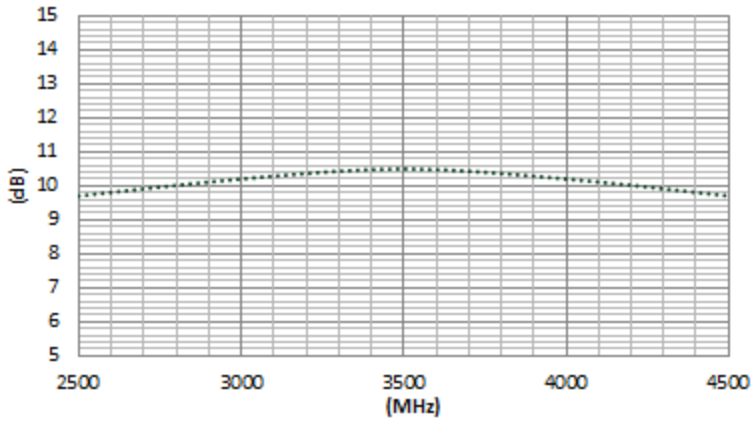
Guaranteed Phase Noise (2500 MHz) Performance (dBc/Hz) at 25C

Frequency (Offset)	Typical	Guaranteed
100 Hz	-135	-130
1 kHz	-145	-140
10 kHz	-160	-155
100 kHz	-160	-155
1 MHz	-160	-155

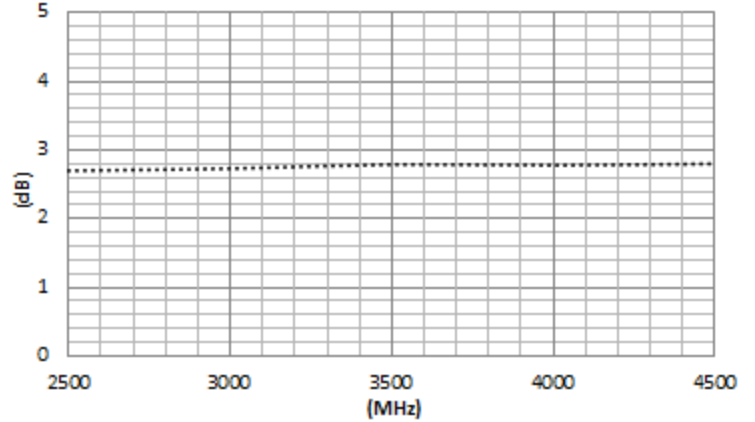
Grounding Instructions	Care should be taken to effectively ground each unit.
Revisions	API reserves the right to make revisions to both product and/or the information contained within their datasheets without advanced notice.
Min./Max. Values	Specifications are guaranteed when tested in a 50 Ω (ohm) system.

Typical Performance Graphs

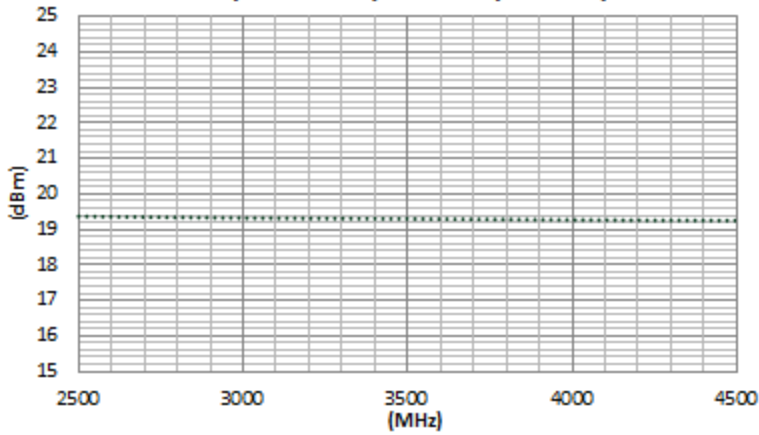
Gain



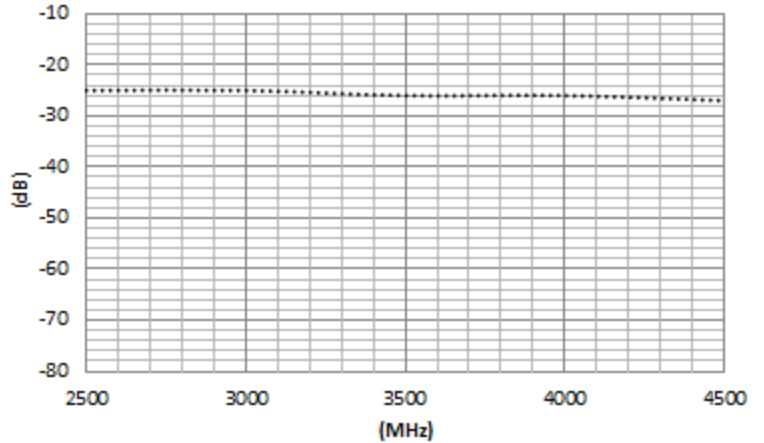
Noise Figure



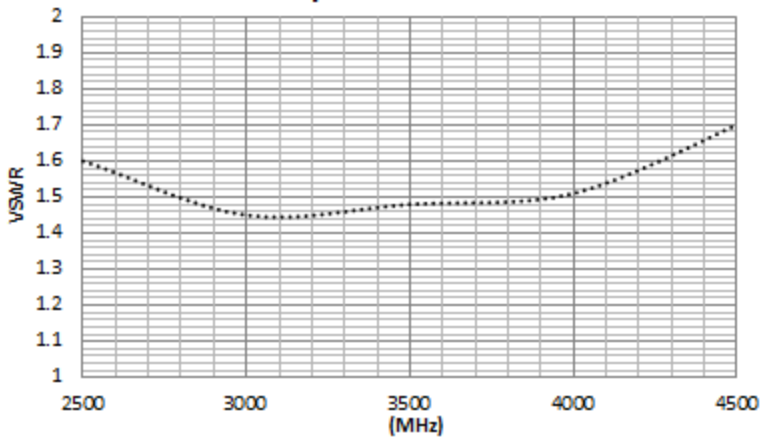
Output Power (1 dB Compression)



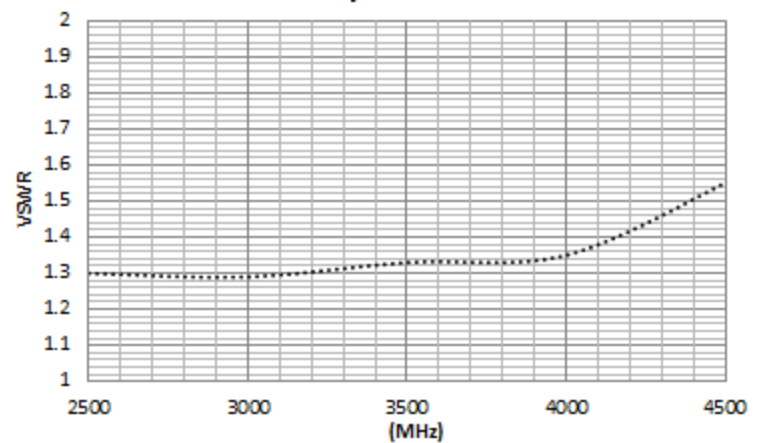
Reverse Isolation



Input VSWR



Output VSWR

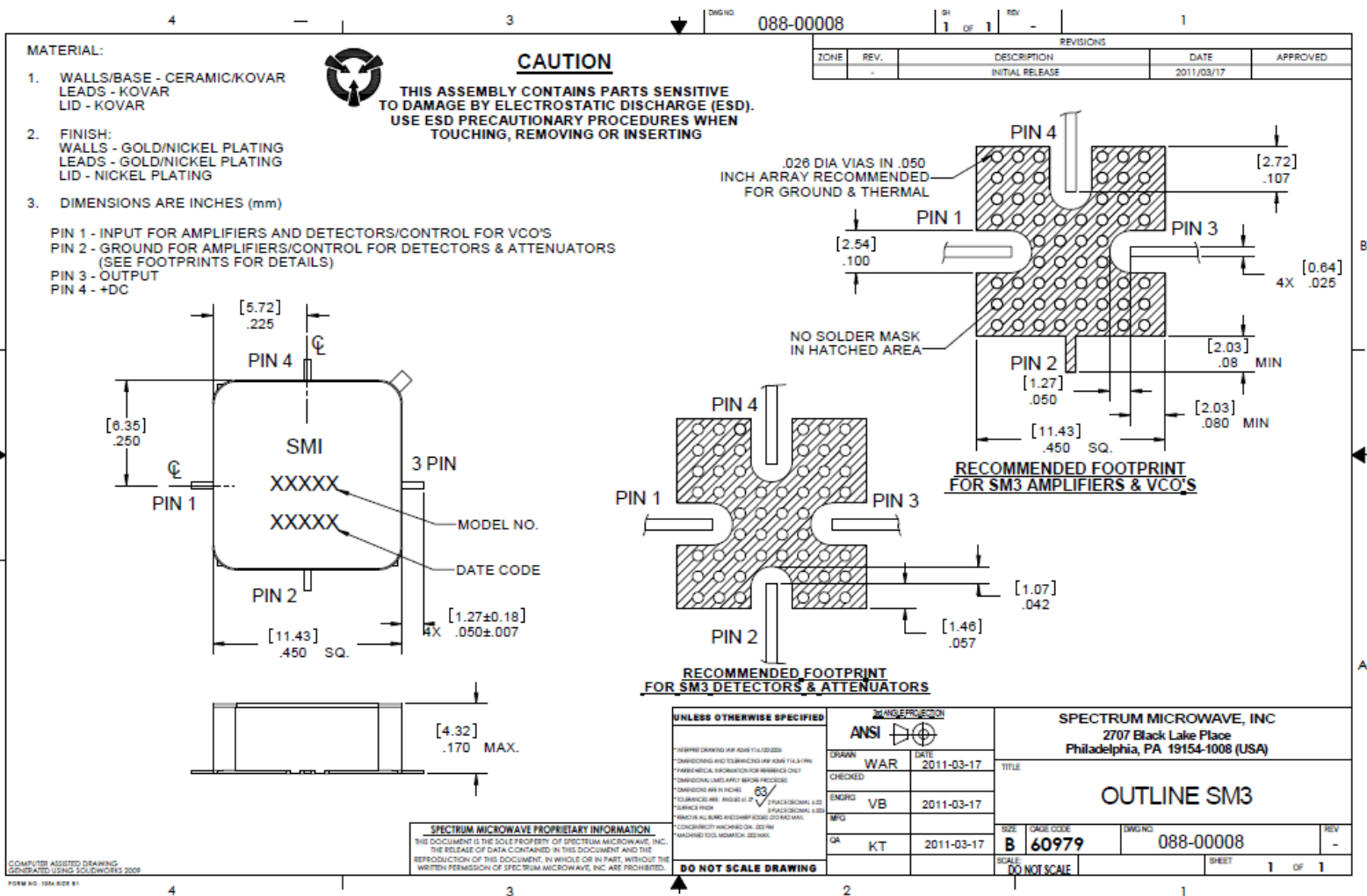


Instructions

Grounding Instructions	Care should be taken to effectively ground each unit.
Revisions	API reserves the right to make revisions to both product and/or the information contained within their datasheets without advanced notice.
Min./Max. Values	Specifications are guaranteed when tested in a 50 Ω (ohm) system.
Typical performance graphs and values are measured at 25°C, but not guaranteed.	

Outline Drawing

(For reference only)



Instructions

Grounding Instructions	Care should be taken to effectively ground each unit.
Revisions	API reserves the right to make revisions to both product and/or the information contained within their datasheets without advanced notice.
Min./Max. Values	Specifications are guaranteed when tested in a 50 Ω (ohm) system.
Typical performance graphs and values are measured at 25°C, but not guaranteed.	

HOUSING: 70/30 CN/NI
ELECTRONIC GRADE

