

ADAPTERS, IN-SERIES

2.4mm

DC - 50 GHz

BULKHEAD MOUNT



MODELS: 5221

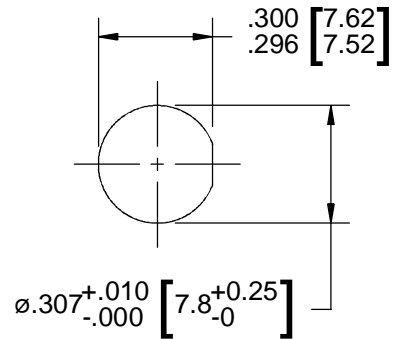
SPECIFICATIONS:

Electrical:

Frequency Range _____ DC - 50 GHz
 VSWR _____
 DC - 18 GHz _____ 1.10:1 Max.
 18 - 26.5 GHz _____ 1.20:1 Max.
 26.5 - 40 GHz _____ 1.30:1 Max.
 40 - 50 GHz _____ 1.35:1 Max.
 Impedance _____ 50 Ohms
 Operating Temp Range _____ -65°C to +125°C

Mechanical:

2.4mm Connectors _____ Passivated Stainless Steel
 Conductors _____ Gold Plated Beryllium Copper
 Nut & Washer: _____ Passivated Stainless Steel
 O-Ring _____ Silicone Rubber



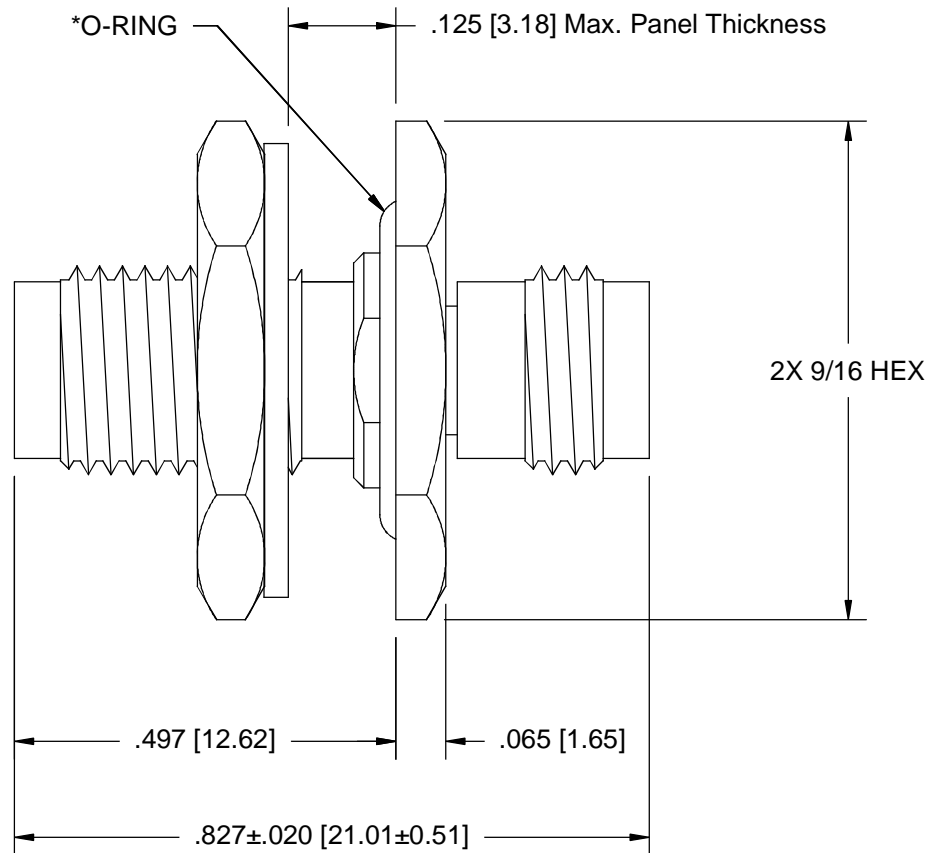
Recommended
Mounting Hole

Model Number: **5221**

*Includes O-Ring as Shown

Model Number: **5222**

No O-Ring Included



Panel Nut, Lock Washer and O-Ring are Shipped Unassembled.

Note: Dimensions in Brackets are Expressed in Millimeters and are for Reference Only.
 Design specifications are subject to change without notice.
 Contact factory for technical specifications before purchasing or use.