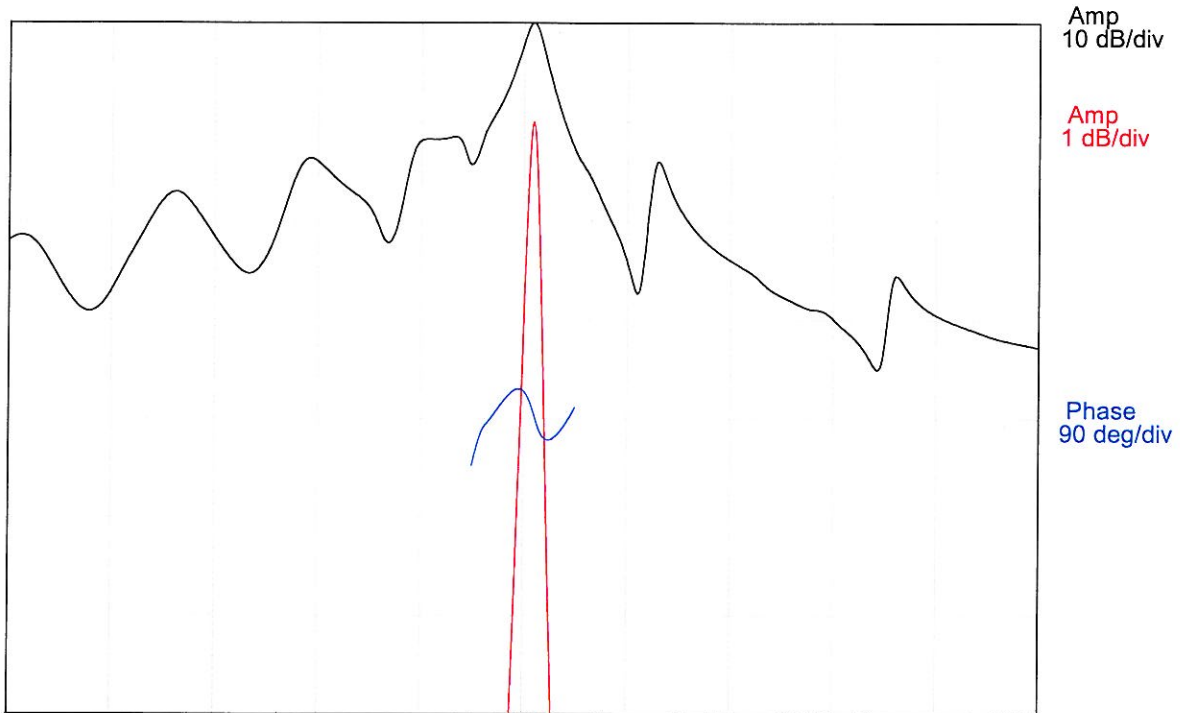


DESCRIPTION

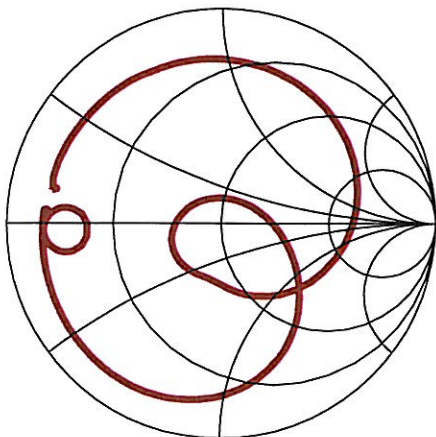
- Miniature 915 MHz SAW Resonator.
- Nominal 180° phase at resonance.
- 3 x 3 mm Ceramic LCC package.
- RoHS compliant

TYPICAL PERFORMANCE

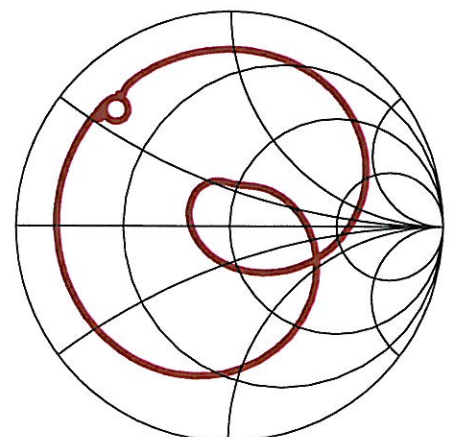


Center = 915 MHz, 1 MHz/div (12.5 kHz incr)

S11 (910-920 MHz)



S22 (910-920 MHz)



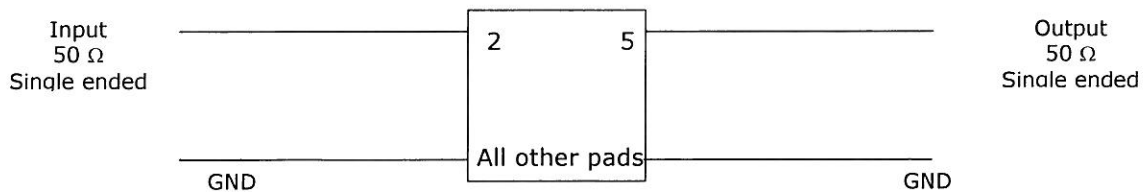
SPECIFICATION

Parameter	Min	Typ	Max	Units
Center Frequency F_C	914.650	915.000	915.350	MHz
Insertion Loss IL	-	8.0	9.0	dB
3 dB Bandwidth	-	180	-	kHz
Phase at F_C	-	180	-	°el
Equivalent Elements				
Motion capacitance C1	-	0.225	-	μ F
Motional inductance L1	-	134.5	-	μ H
Motional resistance R1	-	125	-	Ohm
Parallel capacitance Co	-	1.9	-	pF
Temperature coefficient	-	0.032	-	ppm/C°
Turnover To	-	25	-	Deg. C

MAXIMUM RATINGS

Parameter	Min	Max	Units
Storage Temperature Range	-40	85	°C
Operating Temperature Range	-40	85	°C
Input Power Level	-	0	dBm
DC Voltage	-	12	V

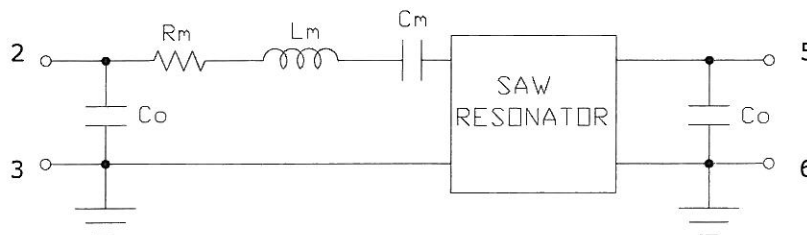
MATCHING CIRCUIT



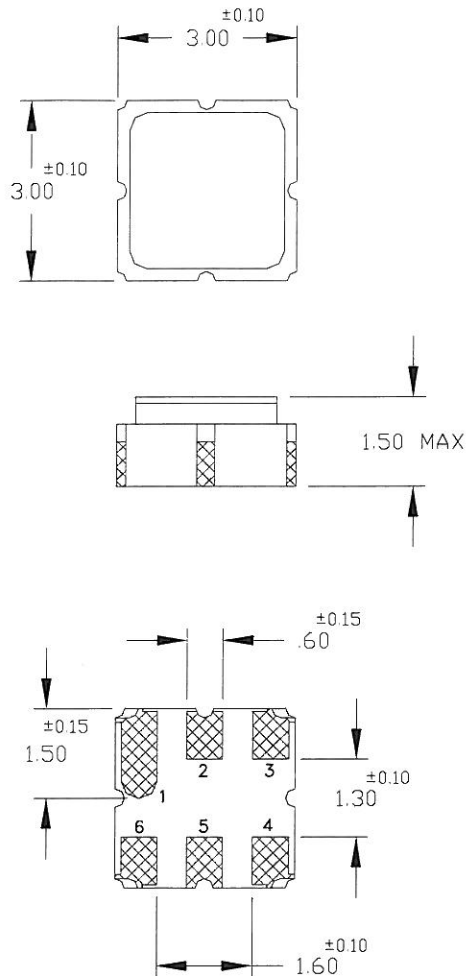
Notes:

- External matching components are not required.
- Device is intended to operate in a 50 Ω single ended system.

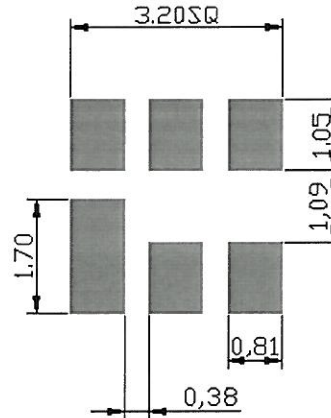
EQUIVALENT CIRCUIT



PACKAGE OUTLINE



SUGGESTED FOOTPRINT



Units: mm

Tolerances are typically ± 0.15 mm except where indicated.

Pad Configuration:

Input: 2
 Output: 5
 Ground: 1,3,4,6

Package Material:

Body: Al_2O_3 ceramic
 Lid: Kovar, Ni plated
 Terminations: Au plating 1 μ m min, over a 1.3-8.9 μ m Ni plating

MARKING



All specifications are believed to be accurate and reliable. However, Spectrum Microwave reserves the right to make changes without notice.
 © 2011 All rights reserved.