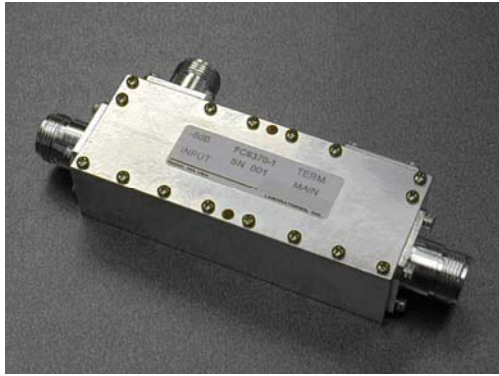


PRODUCT SPECIFICATION

DIRECTIONAL COUPLER DUAL BAND, 6 to 30 dB



FC6370 SERIES

FEATURES

- 6, 10, 16 20 & 30 dB Standard Coupling Values
- Cover, Cellular, PCS & 3G Standard Communications Bands
- Type “N” Connectors Standard
- Robust Low Cost Package Design
- Low Passive Intermodulation Product (PIMP) Design

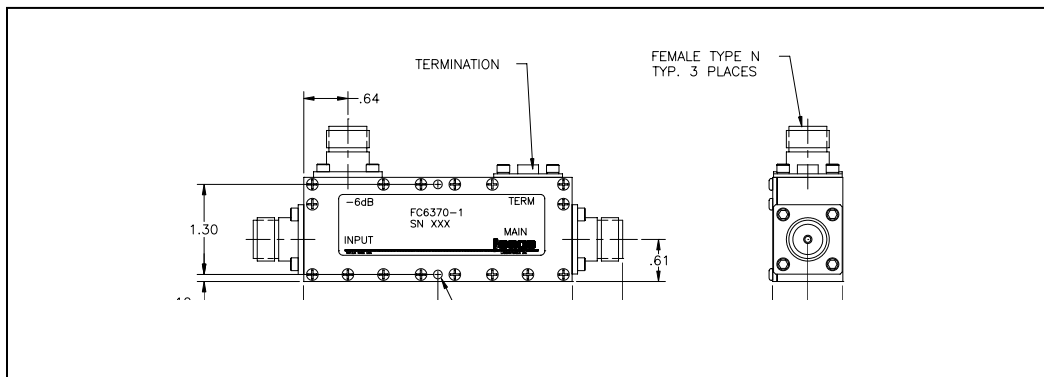
SPECIFICATIONS

Frequency (GHz)	Coupling (dB)	Flatness ¹ (dB)	Return Loss max (dB)	Loss ² max (dB)	Directivity min (dB)	Power Handling max CW (Watts)	PIMP Min (dBm)	Model Number
	6 ± 1				20			FC6370-1
	10 ± 1				20			FC6370-2
0.8-2.5	16 ± 1	± .4	21	.2	22	200	>100	FC6370-3
	20 ± 1				22			FC6370-4
	30 ± 1				22			FC6370-5

NOTES:

1. Flatness specifies the maximum coupling variation within the coupling range.
2. Loss is the actual dissipated and reflected loss. It does NOT include coupling loss.

OUTLINE DRAWING



MISCELLANEOUS:

1. Spectrum Microwave “Standard Warranty and Order Terms and Conditions” apply to all orders.
2. All specifications subject to change without notice.
3. Check “Ordering and Availability Listing” for delivery and ordering information.
4. Contact our local Manufacturers Representative for pricing.

Specification Revision - 071910

