

TERMINATION FLANGED

DC - 2.5 GHz 40 WATTS



MODELS: ANT515-40

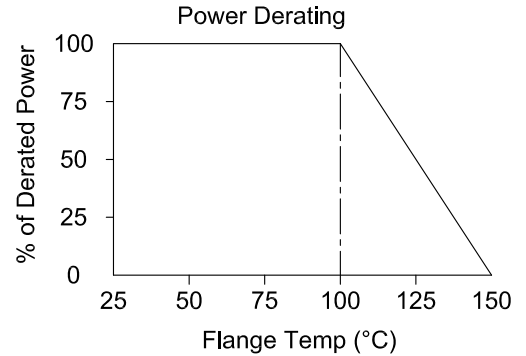
SPECIFICATIONS:

Electrical:

Frequency Range _____ DC - 2.5 GHz
 Impedance _____ 50 ±5% Ohms Standard
 Power Handling* _____ 40 Watts Average
 _____ Derated Linearly to 0 Watts @ +150°C
 VSWR _____ 1.15:1 Typical; 1.25:1 Max.
 Operating Temp. Range _____ -55°C to +150°C

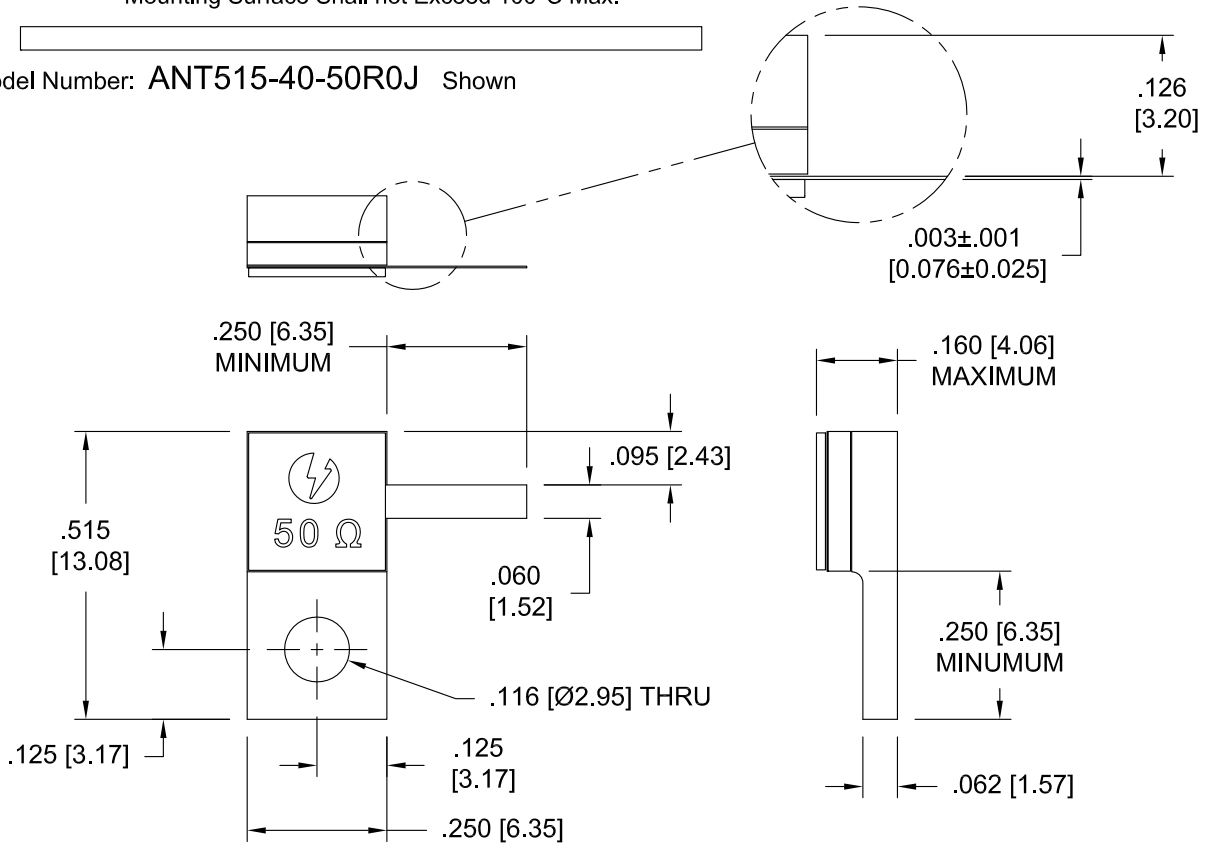
Mechanical:

Substrate _____ Aluminum Nitride
 Resistor Material _____ Proprietary Thin Film
 Cover _____ Alumina Ceramic
 Flange _____ Nickel Plated Copper
 Tab _____ Gold Plated Beryllium Copper



*Mounting Surface Shall not Exceed 100°C Max.

Model Number: ANT515-40-50R0J Shown



Tolerance: .XXX = ±.010

HOW TO ORDER

Model Number: ANT515-40C-XXXXY

Ohm Value: 50R0 = 50 Ohms, 1000 = 100 Ohms (Other Values Available)
 Tolerance: G = ±2%, J = ±5%

Note: Dimensions in Brackets are Expressed in Millimeters and are for Reference Only.

Design specifications are subject to change without notice.