

ATTENUATOR FLANGED

**DC - 1 GHz
50 WATTS**



MODELS: PPA50-X

SPECIFICATIONS:

Electrical:

Frequency Range _____ DC - 1 GHz
 Available Atten. Values _____ 1 - 10 dB in 1 dB increments
 Atten. Accuracy
 DC - 500 MHz _____ ±0.3 dB
 500 MHz - 1 GHz _____ ±0.5 dB
 Impedance _____ 50 Ohms
 Power Handling* _____ 50 Watts Max.
 VSWR
 DC - 500 MHz _____ 1.25:1 Max.
 500 MHz - 1 GHz _____ 1.50:1 Max.
 Operating Temp. Range _____ -55°C to +150°C

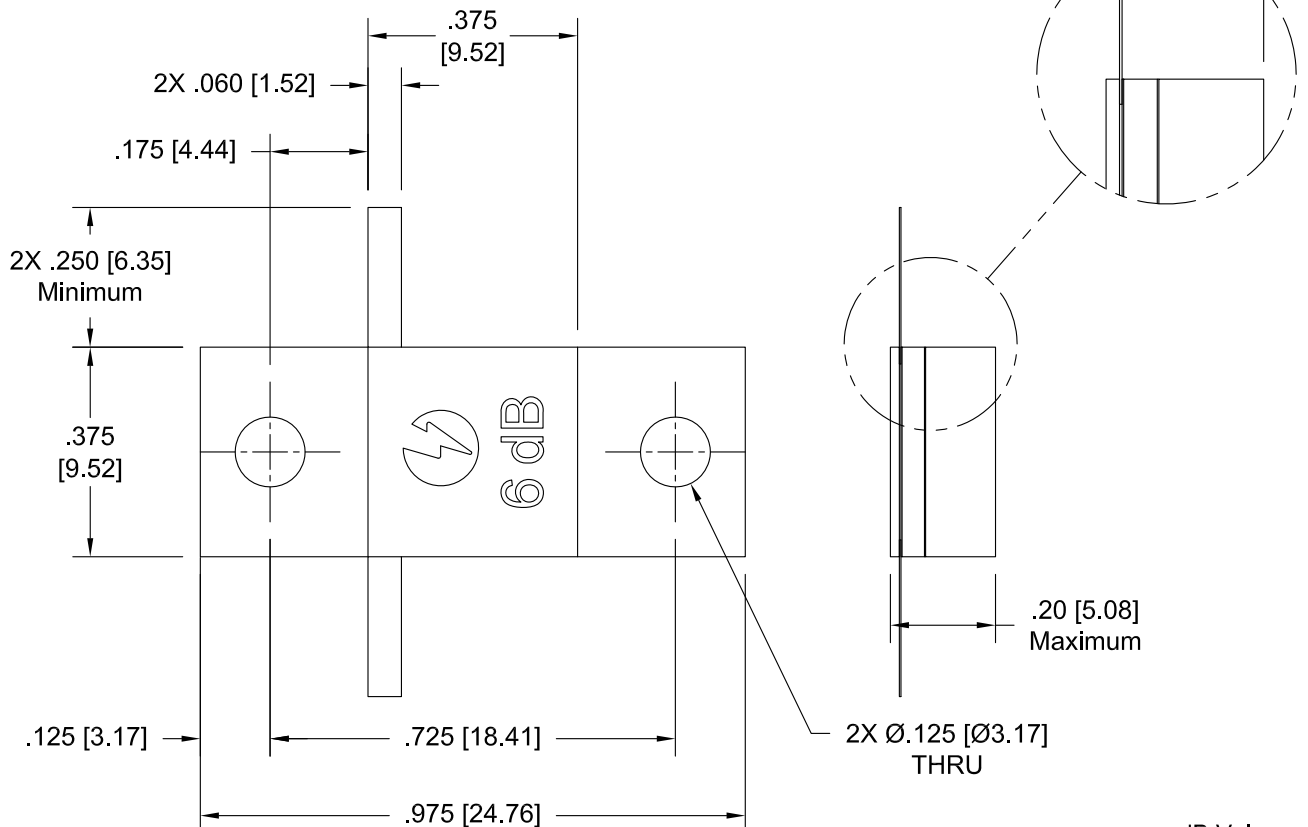
Mechanical:

Substrate _____ Beryllium Oxide
 Resistor Material _____ Proprietary Thin Film
 Cover _____ Alumina Ceramic
 Flange _____ Nickel Plated Copper
 Tab _____ Gold Plated Beryllium Copper

*Mounting Surface Shall not Exceed 100°C Max.



Model Number: PPA50-6 Shown



Tolerance: .XXX = ±.010

HOW TO ORDER └─ dB Value
 Model Number: PPA50-XX

Note: Dimensions in Brackets are Expressed in Millimeters and are for Reference Only.
 Design specifications are subject to change without notice.