

TERMINATION FLANGED

**DC - 6.0 GHz
30 WATTS**



MODELS: PPT515-30-4

SPECIFICATIONS:

Electrical:

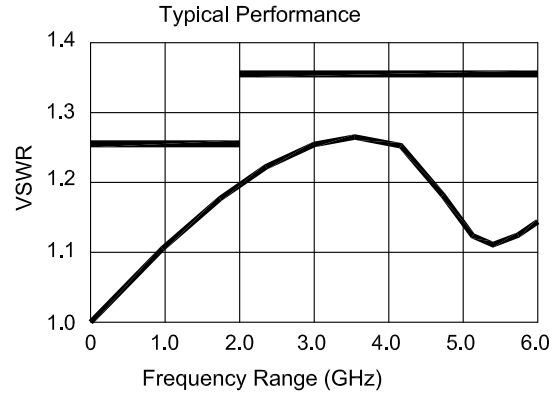
Frequency Range _____ DC - 6.0 GHz
 Impedance _____ 50 ±5% Ohms Standard
 Power Handling* _____ 30 Watts Average
 Derated Linearly to 0 Watts @ +150°C

VSWR

DC - 2.0 GHz _____ 1.25:1 Max.
 2.0 - 6.0 GHz _____ 1.35:1 Max.
 Operating Temp. Range _____ -55°C to +150°C

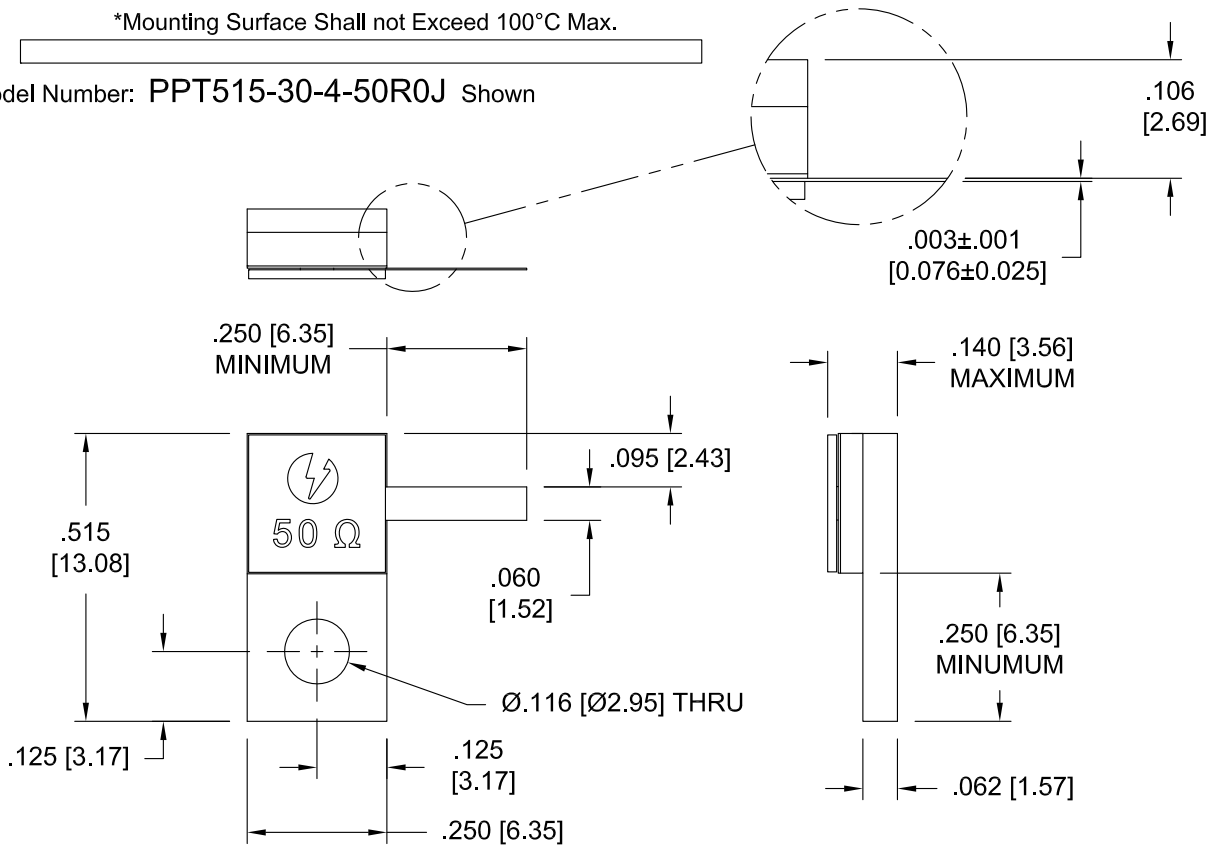
Mechanical:

Substrate _____ Beryllium Oxide
 Resistor Material _____ Proprietary Thin Film
 Cover _____ Alumina Ceramic
 Flange _____ Nickel Plated Copper
 Tab _____ Gold Plated Beryllium Copper



*Mounting Surface Shall not Exceed 100°C Max.

Model Number: PPT515-30-4-50R0J Shown



Tolerance: .XXX = ±.010

HOW TO ORDER

Model Number: PPT515-30-4C-XXXXY

Tab Placement
 = Right (as shown)
 C = Center
 L = Left

Ohm Value
 50R0 = 50 Ohms
 1000 = 100 Ohms
 (Other Values Available)

Tolerance
 G = ±2%
 J = ±5%

Note: Dimensions in Brackets are Expressed in Millimeters and are for Reference Only.

Design specifications are subject to change without notice.