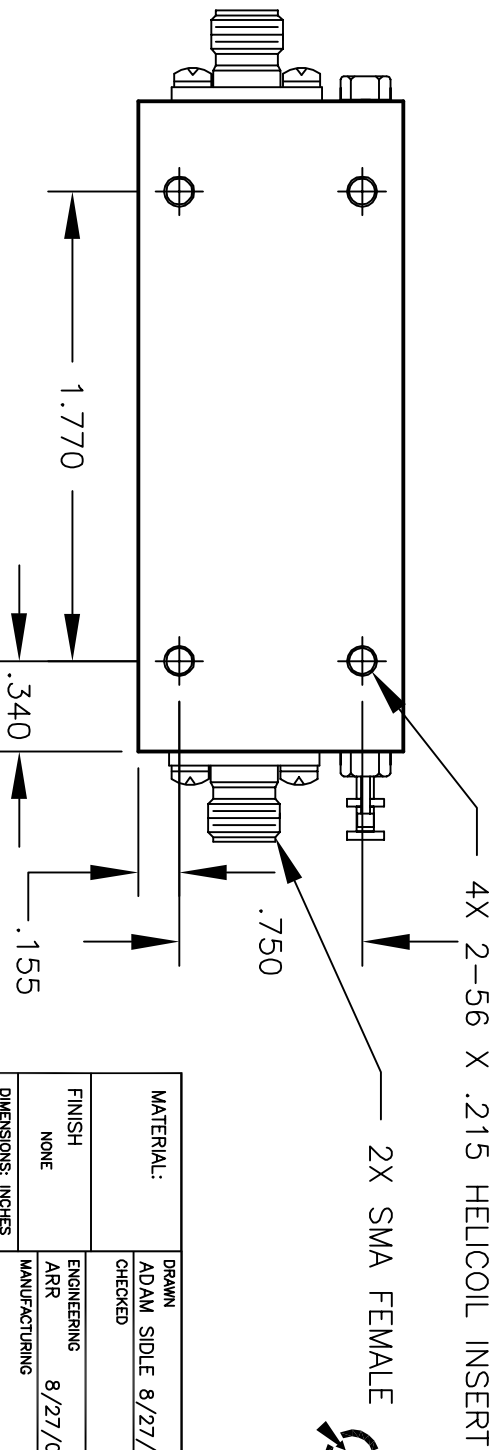
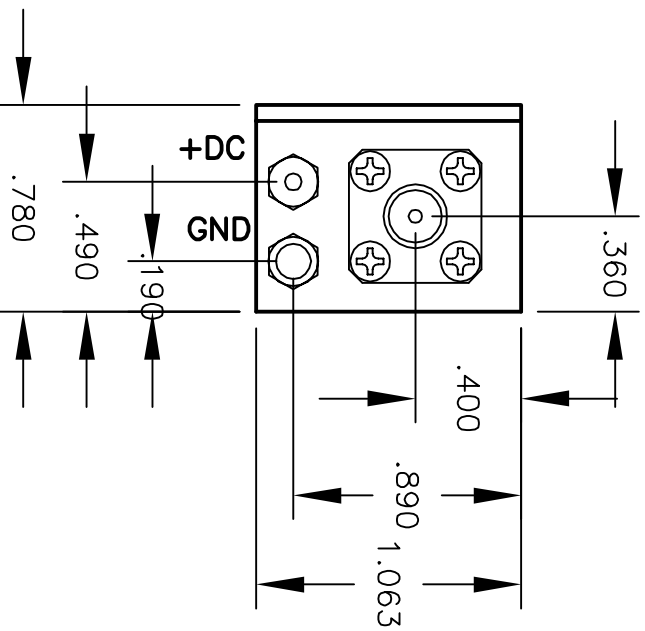
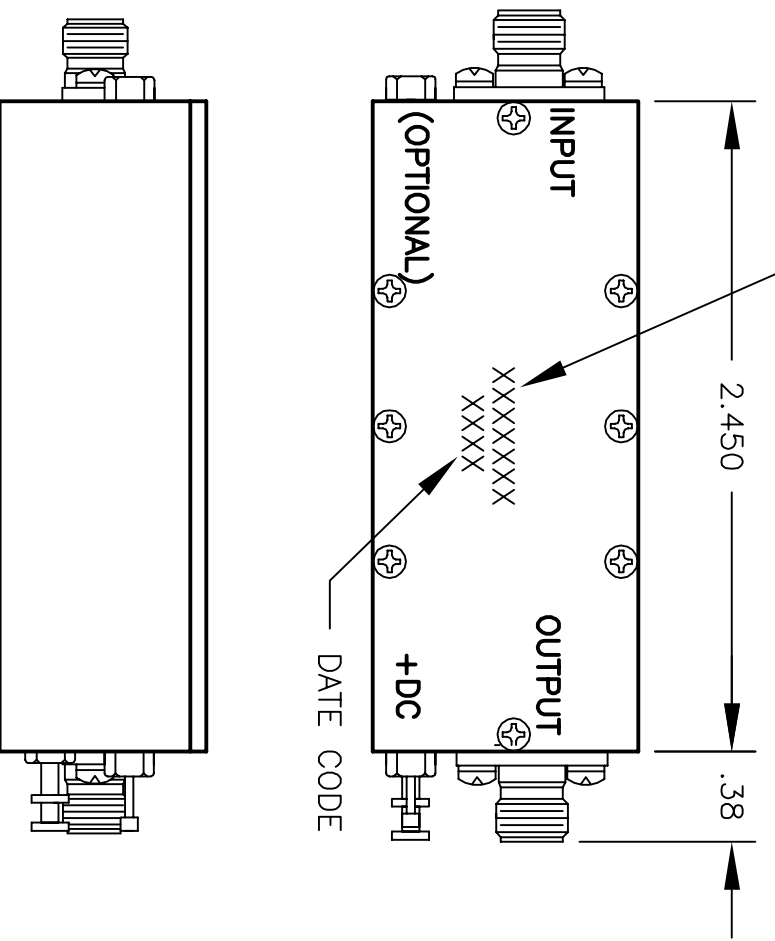


MODEL NO.

OTL2310XXXX

REVISIONS

LTR	DESCRIPTION	DATE	APPROVED
--	EON 11XXX, RELEASE	8/27/03	RA 8/27/03



CAUTION
 THIS ASSEMBLY CONTAINS PARTS SENSITIVE TO DAMAGE BY ELECTRO-STATIC DISCHARGE (ESD). USE ESD PRECAUTIONARY PROCEDURES WHEN TOUCHING, REMOVING OR INSERTING.

MATERIAL:	DRAWN	DATE
	ADAM SIDLE	8/27/02
FINISH	CHECKED	DATE
NONE	ENGINEERING	8/27/02
	ARR	DATE
	MANUFACTURING	DATE
DIMENSIONS: INCHES	QUALITY	DATE
TOLERANCE	RA	8/27/02
DEC. .XX +/- .01		
ANG .X DEG		

2707 BLACK LAKE PLACE, PHILADELPHIA PA. 19154		
OUTLINE DRAWING		
H-4		
CODE IDENT NO.	OTL	2310XXXX
60979		
K:\ENGINEER\ACLTWIN\OLT\OTL_H4	SHT	1 OF 1