

MATERIAL:

- 1. WALLS/BASE - CERAMIC/KOVAR
LEADS - KOVAR
LID - KOVAR
- 2. FINISH:
WALLS - GOLD/NICKEL PLATING
LEADS - GOLD/NICKEL PLATING
LID - NICKEL PLATING
- 3. DIMENSIONS ARE INCHES (mm)

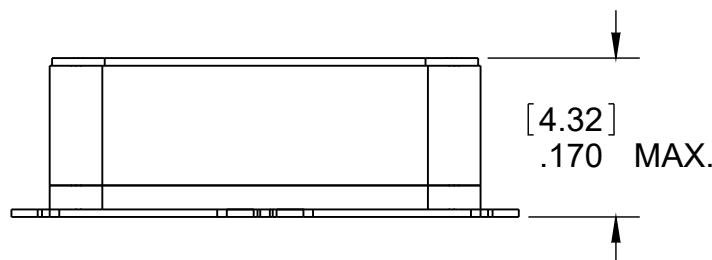
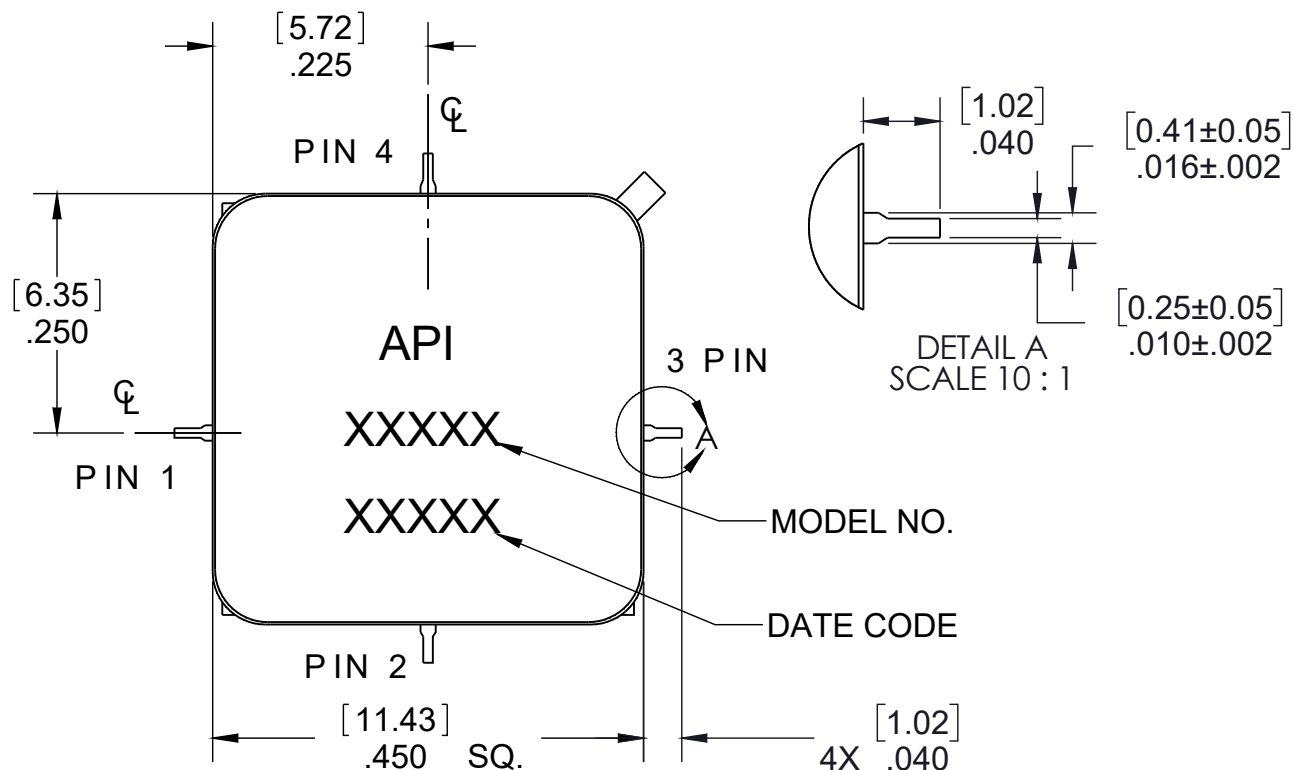


CAUTION

THIS ASSEMBLY CONTAINS PARTS SENSITIVE TO DAMAGE BY ELECTROSTATIC DISCHARGE (ESD). USE ESD PRECAUTIONARY PROCEDURES WHEN TOUCHING, REMOVING OR INSERTING

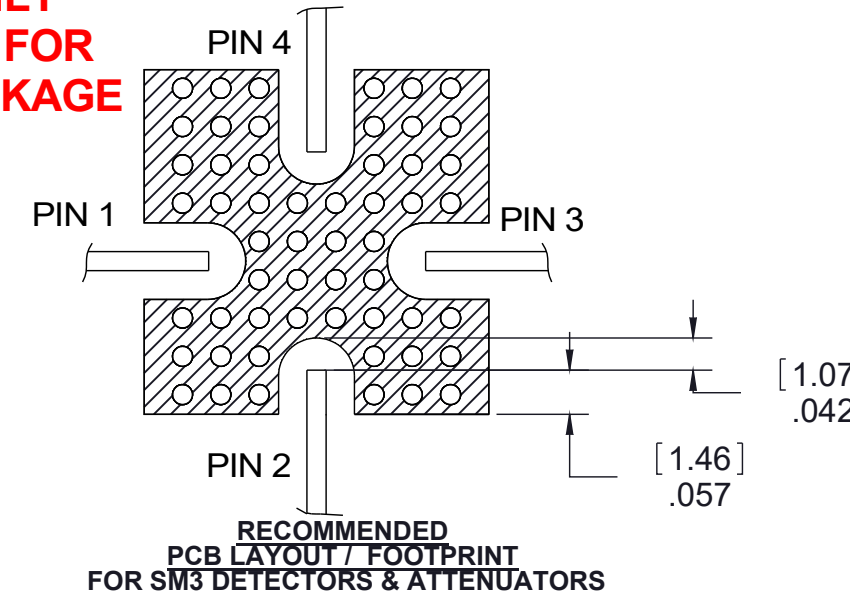
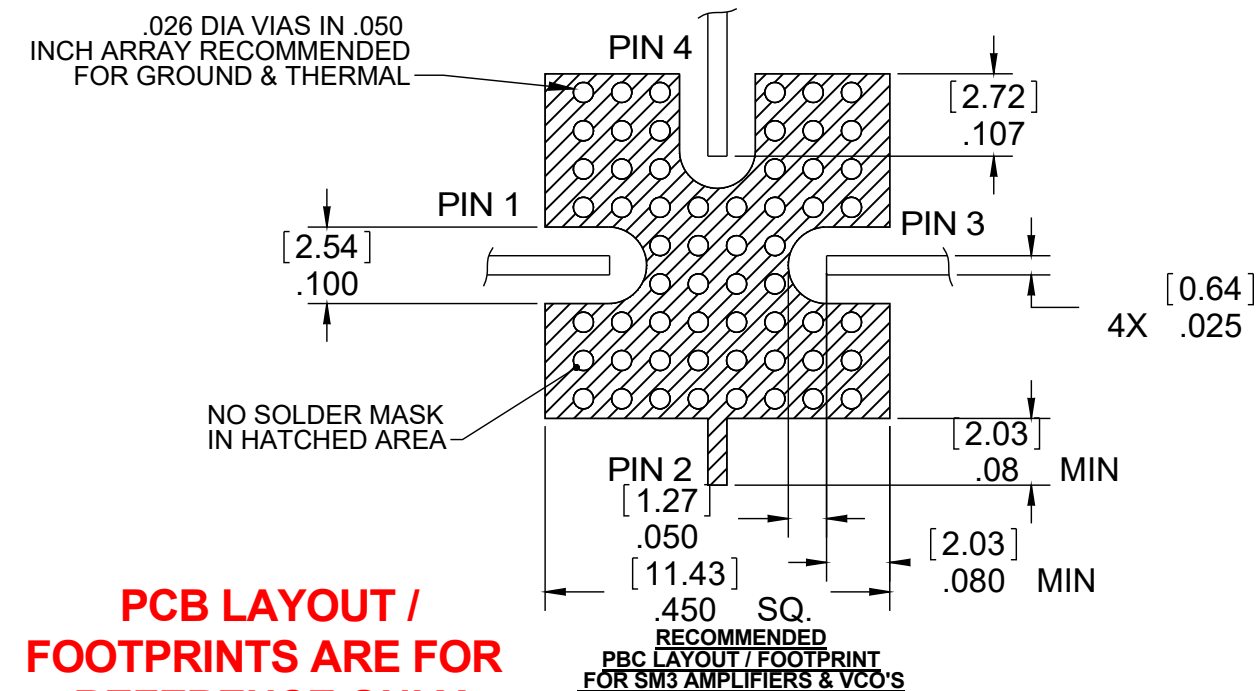
REVISIONS				
ZONE	REV.	DESCRIPTION	DATE	APPROVED
	-	INITIAL RELEASE	2011/03/17	
	A	ECN 27223 CHANGED TO MATCH 400-13760-0001 HEADER	2017/08/03	2017/08/07 KHT
	B	ECN 39150 Add additional notes to clarify dimensional aspects	2019/08/30	2019/08/03 KHT

PIN 1 - INPUT FOR AMPLIFIERS AND DETECTORS/CONTROL FOR VCO'S
 PIN 2 - GROUND FOR AMPLIFIERS/CONTROL FOR DETECTORS & ATTENUATORS
 (SEE FOOTPRINTS FOR DETAILS)
 PIN 3 - OUTPUT
 PIN 4 - +DC



DIMENSION SHOWN DOES NOT INCLUDE SOLDER DIPPED SURFACES

SPECTRUM MICROWAVE PROPRIETARY INFORMATION
 THIS DOCUMENT IS THE SOLE PROPERTY OF SPECTRUM MICROWAVE, INC. THE RELEASE OF DATA CONTAINED IN THIS DOCUMENT AND THE REPRODUCTION OF THIS DOCUMENT, IN WHOLE OR IN PART, WITHOUT THE WRITTEN PERMISSION OF SPECTRUM MICROWAVE, INC ARE PROHIBITED.



UNLESS OTHERWISE SPECIFIED		3rd ANGLE PROJECTION ANSI		SPECTRUM MICROWAVE, INC 2707 Black Lake Place Philadelphia, PA 19154-1008 (USA)	
* INTERPRET DRAWING IAW ASME Y14.100-2004		DRAWN	WAR	DATE	2011-03-17
* DIMENSIONING AND TOLERANCING IAW ASME Y14.5-1994		CHECKED			
* PARENTHETICAL INFORMATION FOR REFERENCE ONLY		ENGRG	VB	DATE	2011-03-17
* DIMENSIONAL LIMITS APPLY BEFORE PROCESSES		MFG			
* DIMENSIONS ARE IN INCHES		QA	KT	DATE	2011-03-17
* TOLERANCES ARE: ANGLES ±1.0°		SIZE		CAGE CODE	DWG NO.
* SURFACE FINISH		B		60979	088-00008
* REMOVE ALL BURRS AND SHARP EDGES .010 RAD MAX.		SCALE:			SHEET
* CONCENTRICITY MACHINED DIA: .002 FIM		DO NOT SCALE			1 OF 1
* MACHINED TOOL MISMATCH: .002 MAX.					
DO NOT SCALE DRAWING					