

# High Temperature Electronics Solutions

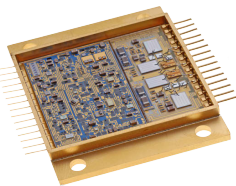
*High Reliability Electronic Modules for Extreme Environments*

## Core Competence

- Extended life-time at 225°C continuous (Ultra High Temperature)
- Thick film multi-layer interconnects
- Large area thick film interconnects
- Low Temperature Co-fired Ceramic (LTCC)
- Chip and wire assembly
- Monometallic wire bonding
- Full compatibility with SOI\* and SiC\*
- Hermetic packaging
- SMT assembly (PCBA & ceramic)
- System assemblies & box builds
- Complete electrical measurements over temperature
- Accredited Environmental Test House

APItech has an extensive history of supplying robust, high reliability products into the Space, Aerospace, and Defence markets. With product capabilities meeting extensive temperature ranges; standard temperature -55°C to 150°C, High Temperature 150°C to 175°C, Extreme high temperature 175°C to 200°C, and Ultra high temperature 200°C to 225°C plus.

With ongoing development in the Ultra high temperature range, utilising specialist techniques of bare semiconductor die on thick film ceramic interconnect addressing the high temperature performance, and reliability issues of traditional glass fibre based printed circuit boards (PCBs) featuring plastic encapsulated components.



\* SOI: Silicon-On-Insulator, SiC: Silicon Carbide

*Whilst every effort is made to ensure the accuracy of the information contained in this brochure, no responsibility can be accepted for any errors and/or omissions. Descriptions and specifications of products are subject to change without notice. Jan 2021*



**Heritage of providing proven technology to harsh environment markets**

## Industrial Sector

- Solid state anemometer electronics
- Offshore safety control systems
- Pressure control sensors
- Motor controllers

## Space Sector: - (Multi die assemblies)

- Artemis Satellite
- International Space Station
- INMARSAT 1, 2, 3, 4

## Aerospace & Defence Sector:

- Artemis Satellite
- International Space Station
- INMARSAT 1, 2, 3, 4
- Artemis Satellite
- International Space Station
- INMARSAT 1, 2, 3, 4

## Medical Sector:

- Artemis Satellite
- International Space Station
- INMARSAT 1, 2, 3, 4