

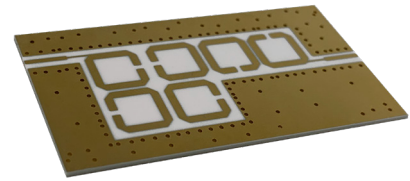
Planar Filters

Thin Film Ceramic

APITech’s low profile planar filters achieve an optimum balance between high performance and minimized package size. Printed filters can be supplied as singular components or incorporated within an integrated microwave assembly to improve SWAP-C. This new product is a natural extension to APITech’s existing portfolio of high performance filter products and provides an additional tool for product optimization. These components target electronic warfare, radar, UAV, navigation, communications, and surveillance applications.

Product Offerings

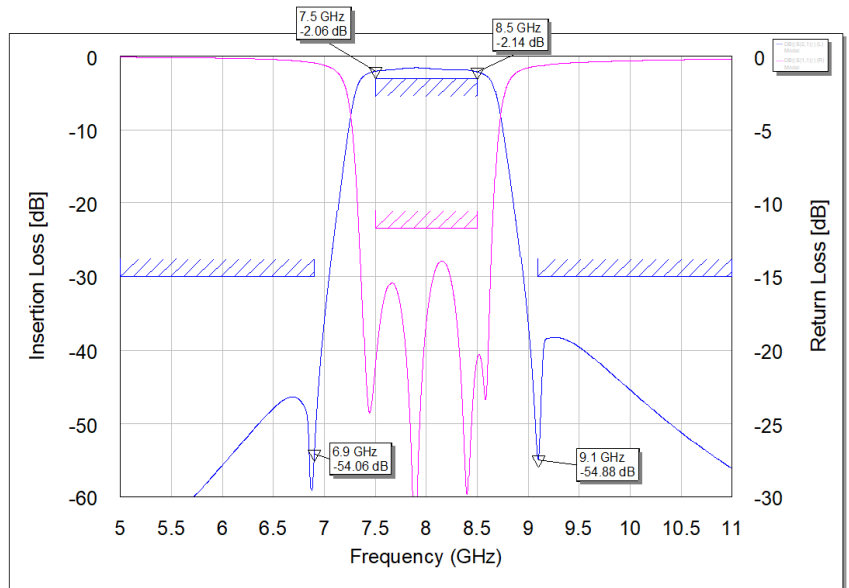
- Frequency Range:** 2 GHz to 30 GHz
- Types:** Lowpass, Bandpass, and Bandreject
- Complexity:** 2 - 12 sections
- Bandwidth:** 2% to 100%
- Power:** up to 20 watts CW
- Operating Temperature:** -40°C to +85°C



8.0 GHz Printed Bandpass Filter

| | | |
|-----------------------|---------------------------|------------|
| Insertion Loss | 7.5 – 8.5 GHz | < 3.0 dB |
| Return Loss | 7.5 – 8.5 GHz | > 11.7 dB |
| Stopband | 0.1 – 6.9 GHz | > 30.0 dBc |
| | 9.1 – 20.0 GHz | > 30.0 dBc |
| Size | 0.90 x 0.50 x 0.20 inches | |
| Connectors | Surface Mount | |

Note: Shield included

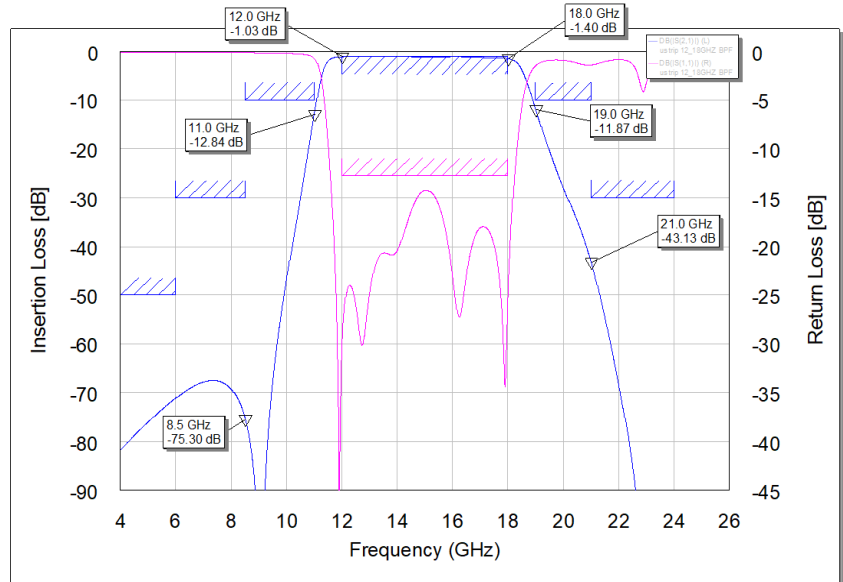


Planar Filters

Thin Film Ceramic

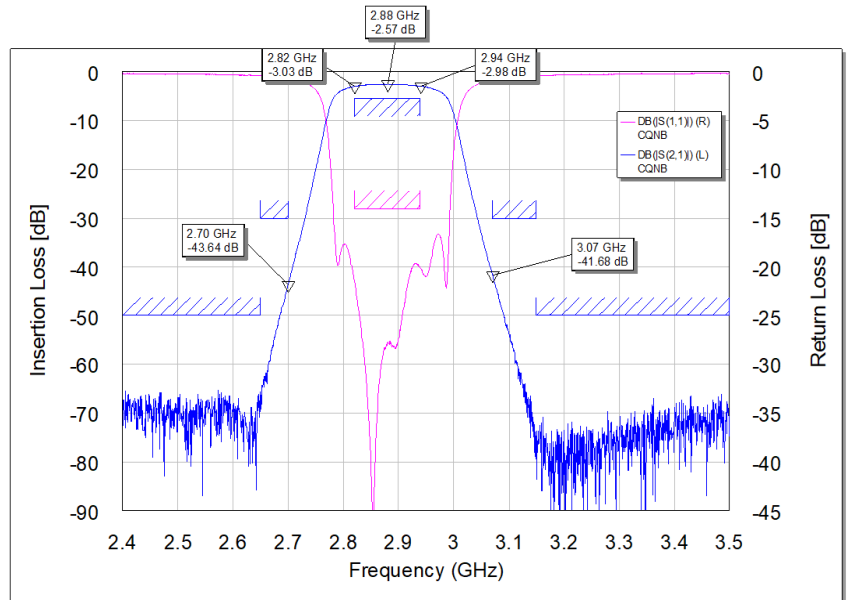
12.0 - 18.0 GHz Printed Bandpass Filter

| | | |
|-----------------------|---------------------------|----------|
| Insertion Loss | 12.0 – 18.0 GHz | <1.5dB |
| Return Loss | 12.0 – 18.0 GHz | >11.7 dB |
| Stopband | 0.1 – 6.0 GHz | >50.0 dB |
| | 6.0 – 8.5 GHz | >30.0 dB |
| | 8.5 – 11.0 GHz | >10.0 dB |
| | 19.0 – 21.0 GHz | >10.0 dB |
| | 21.0 – 24.0 GHz | >30.0 dB |
| Size | 1.00 x 0.40 x 0.03 inches | |
| Connectors | Surface Mount | |



2.88 GHz Printed Bandpass Filter

| | | |
|----------------------------|---------------------------|------------|
| Insertion Loss @ fc | 2.88 GHz | <3.50 dB |
| Passband Flatness | 2.82 – 2.94 GHz | <1.25 dB |
| PB Return Loss | 2.82 – 2.94 GHz | > 11.7 dB |
| Stopband | 0.10 – 2.65 GHz | > 55.0 dBC |
| | 2.65 – 2.70 GHz | >25.0 dBc |
| | 3.07 – 3.15 GHz | >25.0 dBc |
| | 3.15 – 5.00 GHz | >55.0 dBc |
| Size | 1.70 x 0.90 x 0.20 inches | |
| Connectors | Surface Mount | |



Note: Shield included